



Newsletter

Western Michigan Chapter

April 2025

WESTERN MICHIGAN

This months meeting info:

Grand Rapids Meeting:

Kalamazoo Meeting:

Dates:

April 9th & 10th

Location:

**Canopy by Hilton - Grand Rapids Downtown
131 Ionia Avenue SW
Grand Rapids, MI 49503**

Location:

**Park Club of Kalamazoo
219 W. South Street
Kalamazoo , MI 49007**

Speaker:

**Tim Jones
Armstrong International**

Time:

**11:30 Social
12:00 Presentation & Lunch**

Time:

**11:30 Social
12:00 Presentation & Lunch**

Subject:

Steam Basics & Water Hammer

Cost:

\$30 per person

Cost:

\$30 per person

Important Information:

Registration is Open!!!

Get your foursomes together. Registration is now open for this year's West Michigan ASPE Golf Outing. Use the link below to sign up:

[Register Here](#)



Chapter President—Brian Peceny

Welcome to April. As chapter president, one responsibility is to make sure we have a full roster of chapter positions for each year. We consider the chapter year to match a school year, so September thru June. As I've mentioned during some of our lunch meetings, we are looking for new volunteers to join our board, as we have a few members who would like to try different positions on the board, or a few are looking toward retirement. You, our membership, vote for who will lead the different positions. So, what are the Chapter Board Positions. Here is a quick overview.

Chapter President: Lead the local chapters. Lead board member transitions from year to year. Attend Reginal Presidents Meetings (one per year), oversee and set the chapter budget with the treasurer. Provide a monthly report to the membership and prepare the Annual Chapters report at the end of the year. If the President has a great board, this position is not too time consuming and can be quite enjoyable.

Vice President, Technical: This position is your basic second on command with each Chapter. The biggest responsibility here is to find, recruit and organize our monthly speakers for our meetings. Our technical leader looks to support our members in obtaining CEU's. So, if you know many associates in the field of plumbing, this could be a great position for you. If not, great opportunity to reach out and make those professional connections.

Education Chair: This position can support the VP Technical to find worthy programs for our meetings. They are often tasked to create a special education opportunity for our chapter like special technical learning sessions separate from our monthly meetings which could include specific educations tutorial sessions, code reviews, special speakers like code officials or well established and published plumbing professionals.

...continued on page 4



New Century Sales, Inc.
Manufacturer's Representatives

EAST MICHIGAN
1715 Traditional Dr.
Commerce Township, MI 48390
P (248) 960-1147 F (248) 960-1149

WEST MICHIGAN
550 36th St. SE
Grand Rapids, MI 49548
P (616) 600-9660

BETTER DESIGN. BETTER HEATER.
BEST SOLUTION

OUR BEST HYBRID YET.

Packed with the most durable, advanced features, the Rheem® Hybrid Water Heater makes installs and service easier. Plus, with 50- and 80-gallon models available, it's the best solution to drive sales for your business.

- 360° Performance™**
Estimated savings of over \$4000 in energy costs!
- 360° Installability™**
Horizontal transport for easy pick-up
- 360° Durability™**
Best-in-class warranty*

EcoNet™ EcoNet™ Enabled™ for alerts & control from home or on-the-go.

Rheem.com/HybridSolutions
or contact your local distributor below for details

*Based on comparison of a 50-gallon Rheem® Hybrid Water Heater compared to a 50-gallon standard tank water heater with a 10-20°F. Based on comparison of a 50-gallon Rheem® Hybrid® Electric Hybrid Water Heater with a leading competitor's 50-gallon Hybrid Water Heater. †Purchase and installation of EcoNet with 50-gallon Hybrid Water Heater required. ‡Consult with your local dealer for more information.



The new degree of comfort.™



**UP TO \$300
FEDERAL TAX CREDIT****

Filtration Without Frustration

Save Time and Money On Maintenance. Access OASIS filtration systems at the top of the bottle fillers with Tilt 'n Tether! Change filters in minutes with easy access to the filter up top. Oasis' exclusive Tilt 'N Tether allows for faster, hands-free filter changes without crawling on the floor.

Learn more at oasiscoolers.com



OASIS
WE KNOW WATER.™

Changing Filters Has Never Been Easier



GREAT LOOKING. GREAT OPTIONS. GREAT VALUE.

BRADLEY LAVATORY SYSTEMS offer a variety of touch-free and worry-free options for handwashing in public spaces. Design your ideal solution with multiple materials, basin shapes and faucet choices. Trust Bradley for your next project, the leader in commercial handwashing. Visit bradleycorp.com for more information. **Commercial Washrooms. Brought to Life.**



EVERO
CAST-FORMED NATURAL QUARTZ

Terreon
CAST-FORMED SOLID SURFACE



A WATTS Brand
bradleycorp.com/lavatory-systems

IBC

SIMPLE

Mount > Connect > Plug In > Enjoy Endless Hot Water

- A total of 4 moving parts - Unparalleled in the industry (Fan, Bypass Valve, Gas Valve, and Damper)
- New illuminated touchscreen control display panel
- Built-in bypass valve to prevent temperature fluctuations
- Superior performance in hard water areas
- Contractor friendly, 2" venting up to 65 ft. with 2" vent adapter
- Extended pipe connections
- Universal internal parts
- Sleek wall mounted space-saving design

RELIABLE

- Proven patented single pass Labyrinth heat exchanger with fully integrated copper waterways
- No flow reduction in hard water conditions
- Innovative state of the art electronic control

EFFICIENT

- Fully condensing one-piece heat exchanger
- Wireless cascade of up to 8 units. Multiple cascade configurations available.
- DHW recirculation pump control eliminates the need for an external timer
- Qualifies for top-tier energy rebates. Check your local utility for rebate opportunities.
- Ultra low NOx / low greenhouse gases
- Up to 5.2 GPM continuous at a 70°F rise
- Advanced temperature control

Easy Maintenance

1. Bypass Valve
2. Exhaust Fitting
3. Burner Fan
4. Heat Exchanger
5. Rear Flue Duct
6. Gas Valve
7. Touch Pad Control
8. Condensate Trap
9. Air Intake
10. Cover
11. Inlet Gas Line
12. Outlet Gas Tube

*Optional and subject to local regulations only. Consult installation & Operation Manual for further information. <http://www.ibcboiler.com>



4 Moving Parts

Fan, Bypass Valve, Gas Valve, and Damper

The SFT Superflow™ contains cutting-edge, solid-state electronics to control its gas valve, fan, and ignition. By doing so, we've succeeded in reducing the number of moving parts, made service simple, and increased reliability.

Represented by New Century Sales:

WEST MICHIGAN
Michael Zago
C (616) 293-2121

WEST MICHIGAN
Trevor Montag
C (616) 840-6659

EAST MICHIGAN
Todd Hiler
C (513) 633-2609

EAST MICHIGAN
Ross Beck
C (734) 673-2119

E mikez@newcenturysales.com

E trevorm@newcenturysales.com

E toddh@newcenturysales.com

E rossb@newcenturysales.com

www.newcenturysales.com

Chapter President—Brian Peceny (continued)

Vice President Legislative: This chapter positions focuses on supporting our membership with code related questions or issues. They tend to be very active in providing monthly reports in our newsletter. These have very valuable and excellent the last few years. I hope our members have taken the time to read these each month.

Vice President Membership: The VP membership has the specific task to manage our membership. With the help of national, they keep the board updated on how we are doing with our membership count. They are responsible with recruitment, but honestly all board members are responsible for recruitment. They will also support with the setup and organization of our special events like the golf outing or special young engineer events.

Treasurer: You guessed it, they manager our budget. National asks for membership dues to support national. They help the local chapters, but most of our money is raised independently. For the most part, we try to operate at a breakeven point. We have money saved and try to keep it that way. The treasurer tracks all the financial transactions and makes a final year report National.

Administrative Secretary: Pretty simple task of recording our Chapter meetings and activities. These do get sent to national.

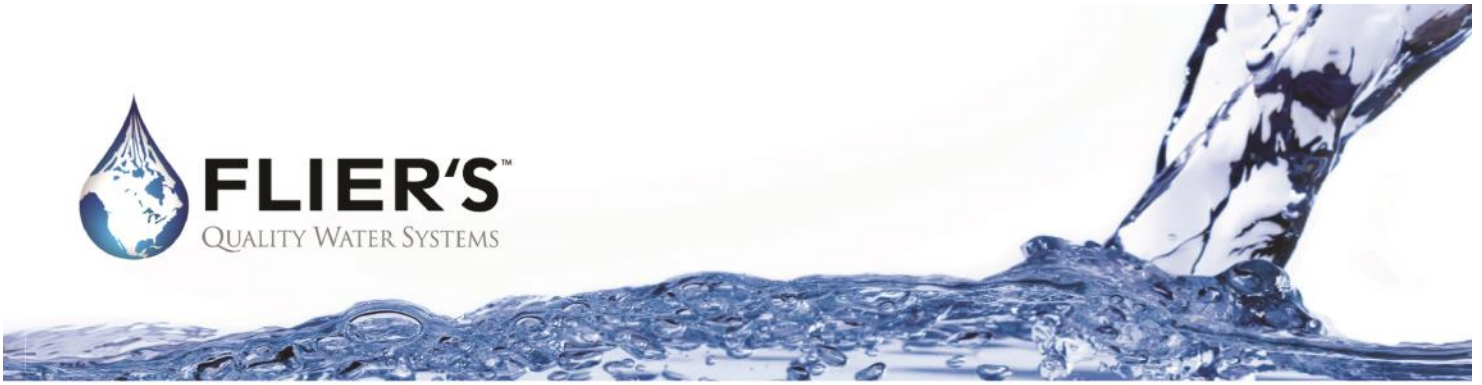
Corresponding Secretary: This position is responsibly for Chapter correspondence. For our chapter, they have historically also been the person responsible for the monthly newsletter. They often support or active in setting up special events like the golf outing.

Newsletter Editor: As noted above, our Corresponding Secretary has also been responsible for the monthly newsletter. Their biggest task is the push and prod the other chapter board members to get their reports or articles sent in so

...continued on page 6



FLIER'S™
QUALITY WATER SYSTEMS



Office Drinking Water on a Budget

Are you tired of terrible tasting coffee and water at the office break room or beverage station at your restaurant?

Are you on a limited budget or have limited space?
Don't have the time to look into a big project?

Most offices are fed by city water which is supposed to meet all the primary and secondary purity requirements by federal and local municipalities. For the most part it does but what generally gives the bad taste and flavor is chlorine and sediment in the water.

Or even your home for that matter if you're on city water and you're on a budget and want something simple and inexpensive that will improve the taste immediately.

Flier's has designed point-of-use drinking water filter systems utilizing carbon and particulate filters, sometimes incorporating ultraviolet light if bacteria is a concern.

We have designed systems that have an automatic shut off after a certain number of gallons, prompting the customer to change the filters or to call and get the filters changed for them.

Also, many restaurants could attract more customers with better-tasting fountain pop, water, and coffee by installing these filter systems. It's shocking the number of restaurants with coffee that tastes absolutely terrible and has floaties in it. This can be prevented with one of Fliers' inexpensive systems.



Drinking water system (source: watts.com)

**Contact Flier's for improved taste of your office/restaurant's pop, water, & coffee!
If you're a restaurant on a budget, we can help!**

Contact Flier's today!

Corporate Office: Byron Center, MI: (616) 345-3407

Branch Office: Kalamazoo, MI: (800) 650-7034

qualitywaterexperts.com

Chapter President—Brian Peceny (continued)

they can be included in the newsletter.

Chapter Website Manager: We use a special website provider which charges us a fee. This site allows for the posting of newsletters and other chapter information. This website also manages our meetings and payment for our meetings. It needs “management”, but the goal is to rely on the software to do the bulk of the work and remove as much time commitment from the chapter position as possible.

Event Coordinator: Are you a social person? Do you know all the best places to dine or have fun? Then this might be the position for you. This person helps find the locations for our meetings and special events. If things are going well, the position can be straight forward. But if you want a special event, or new meeting locations, it can be more difficult. But, it would be a fun position if this is something you enjoy doing.

Chapter Affiliate Liaison: West Michigan has not assigned this as a separate position. An affiliate member is one who works in the plumbing industry but may not be an engineer or designer, often a manufacturer’s representative. We look for and encourage our affiliate members to be active members and to join our board.

ASPE Young Professionals Liaison (AYPL): As a national organization and as a local chapter, we want and need participation from the young engineers. This position’s responsibility is support and enhance those relationships.

If you are still with me, we would love to find new engineers or reps to join our board. We would likely start you out with a position that would not require too much of your time. If you are interested, please reach out to me or to one of our other board members.



EAST MICHIGAN
 1715 Traditional Dr.
 Commerce Township, MI 48390
 P (248) 960-1147 F (248) 960-1149

WEST MICHIGAN
 550 36th St. SE
 Grand Rapids, MI 49548
 P (616) 600-9660

 https://www.americanstandard-us.com/professionals/architect-designer (Kitchen & Bathroom)	 www.amtrol.com (Expansion Tanks)	 www.bascoshowerdoor.com (Shower Doors)	 A WATTS Brand www.bradleycorp.com (Washroom Solutions)	 Hydronic Solutions www.caleffi.com/usa/en-us (Hydronic Accessories)
 www.eemax.com (Tankless & Tank Electric Water Heaters)	 www.fiatproducts.com (Shower Floors)	 www.Friedrich.com/WaterHeating (Water Heating)	 https://www.grohe.us/customize/architects-and-designers (Faucets)	 www.fiatproducts.com (Shower Floors)
 www.jjmalkalinetech.com (Condensate Neutralizers, Acidic Condensate Solutions, Alkaline Tech)	 www.oasisbath.com (Fiberglass & Acrylic Tub & Showers)	 www.oasiscoolers.com (Oasis Water Coolers)	 www.oatey.com (Cherne, Dbn Brass, Harvey & Hercules)	
 https://na.panasonic.com/us/home-living-solutions/ventilation-indoor-air-quality/ (Bath Fans)	 www.raypak.com (Residential and Commercial Hydronic Products)	 Unlimited Polymer Solutions www.rehau.com/us-en (PEX Plumbing Products)	 www.rheem.com www.ruud.com (Water Heaters)	



Represented by New Century Sales:

WEST MICHIGAN Michael Zago C (616) 293-2121 E mikez@newcenturysales.com	WEST MICHIGAN Trevor Montag C (616) 840-6659 E trevorm@newcenturysales.com	EAST MICHIGAN Todd Hiler C (513) 633-2609 E toddh@newcenturysales.com	EAST MICHIGAN Ross Beck C (734) 673-2119 E rossb@newcenturysales.com
---	--	---	---

www.newcenturysales.com



VP Technical—Nick Von Myhr

Hello Everyone!

First, I would like to thank Taylor Goade for the excellent presentation given over Pressure Boosting Fundamentals! It was very well presented, with tons of great information and packed full of very important design considerations.

This month I am pleased to introduce Tim Jones from Armstrong International to talk to us about Steam Basics & Water Hammer. Tim has over 30 years of field, lab, and general work experience involved with the design, application, and marketing of steam and hot water products. These include steam and domestic water heaters, digital mixing valves, humidifiers, steam traps, pressure reducing valves, condensate pumps and flow meters. Steam systems aren't super common in standard commercial and educational designs, so consulting with an expert like Tim is very valuable to the project's success. Join me in giving Tim a warm Michigan spring welcome.

I look forward to seeing you all there.



SLOAN[®]

**DropSpot™ Bottle Fillers
and Water Coolers**

Elevate any space with the same Sloan sensor technology you know and love, now in the form of sleek and stylish bottle fillers.



DIVERSIFIED
SPEC. SALES, INC.

Represented by Diversified Spec. Sales, Inc.
www.diversifiedspec.com | 248-398-2400

HOW DIRTY IS YOUR HOT WATER SYSTEM?



EXTRUSION BATHS BEFORE AND AFTER INSTALLATION OF ARMSTRONG NANOBUBBLE GENERATORS.



Make your hot water system more durable and energy-efficient by removing and preventing scale build up with Armstrong Nanobubble Generators.
Save up to 35% on energy and maintenance costs.

- ✓ Improved Heat Transfer
- ✓ Lower Maintenance Costs
- ✓ Extended Equipment Life
- ✓ System Cleaning & Repair
- ✓ Increased Production
- ✓ Reduced Chemical Use

See the results for yourself and start saving today!



 **MERLO**
ENERGY

A MEMBER OF THE KENDALL GROUP

Questions? Contact Us:
 800-362-4994
sales@merloenergy.com

FIGHTING CORROSION & BACTERIA LIKE NO OTHER



Only Bradford White features exclusive Vitraglas® tank lining with Microban®:

- Vitraglas® provides unsurpassed protection from the corrosive effects of water.
- Microban® antimicrobial product protection helps prevent the growth of bacteria, mold and mildew on the surface of the tank lining.

**Vitraglas® and Microban® offer
product protection and peace of mind
around-the-clock.**



West Michigan is the proud home of Bradford White Water Heaters.

Microban® antimicrobial product protection helps prevent the growth of bacteria, mold and mildew that may affect the product. The built-in antimicrobial properties do not protect users or others from disease-causing organisms. Microban® is a registered trademark of Microban Products Company. ©2023, Bradford White Corporation. All rights reserved. BAHBA0123

VP Membership—John Cassady

We are currently at 93 members in the West Michigan chapter. Please join me in welcoming Hayden White, Julia Sicoli, and Chris Golland to the chapter.

If you know anyone interested in joining our chapter, please have them reach out. All new members will receive a voucher for a free meeting, redeemable at checkout when registering for an event.

For those of you who have a membership expiring by the end of May, you should have received an email reminder from the national society already. I will send out follow-up reminders to you all as well.

When you are renewing your membership, please be sure to select West Michigan as your “home chapter”. Any “at large” members may miss out on communication from the chapter.

You can also update your chapter affiliation by logging in to ASPE.org, following My Account > My Profile, and editing your information.

If you have a coworker interested in joining our chapter, please have them contact me with questions about membership.



Highland Tank

Automatic Grease Interceptors with flush-in-floor option
15 GPM - 800 GPM

Underground Passive Grease Interceptors
250-60,000 gallons

Aboveground Passive Grease Interceptors
250-60,000 gallons

www.highlandtank.com
phone: 814-893-5701

Contact: Jeremy Martin
jmartin@highlandtank.com
260-704-1857

VP Legislative —Luciana Kayo

If you have ever designed plumbing systems for high rise buildings, laundromats, or cash wash facilities, you must have come across the term “suds pressure zone”. But if you have not encountered it yet and you are curious, here is what it means.

A suds pressure zone is a specific section within a building’s sanitary drainage and vent system where an excessive buildup of soap suds—created by detergents from bathtubs, sinks, washing machines, and dishwashers—can occur. This foaming can interfere with the normal flow of wastewater, especially around bends, offsets, or the base of vertical stacks. When not properly managed, it can cause wastewater to back up into fixtures on lower floors. Suds not only travel with wastewater but can also block air movement in the vent system and disrupt trap seals, which can lead to foul odors or sewer gases entering the building.

These pressure zones are particularly significant in settings like laundries, car washes, and other industrial spaces where large volumes of soapy water are discharged.

Soaps and detergents these days produce much less suds than in the past, therefore, it is not a typical concern in most residential homes.

What causes a suds pressure zone?

- High-velocity discharge of soapy water
- Long horizontal drainage runs
- Inadequate sized pipes or insufficient venting
- Multiple appliances discharging into the same branch line

How to prevent issues in the drainage piping?

Properly designing sanitary waste and vent piping is very important to prevent having drainage issues. Nobody would want wastewater from higher floors backing up into a lower-level sink or bathtub. That would be unsanitary and a potential health hazard. To prevent this, plumbing systems should be designed with:

- Larger diameter pipes to allow both suds and water to flow freely
- Adequate venting to relieve pressure buildup
- Dedicated piping for suds-producing fixtures and appliances
- Air admittance valves (AAVs) or additional vent stacks in tricky areas

...continued on page 14

VE Sales merges with Sales Service Plus

Dustin Gardner

dgardner@salesserviceplus.com

616.558.3128



Highland Tank
www.highlandtank.com
phone: 814-893-5701

- Aboveground & Underground Oil/ Water Separators
- Oil/Sand Interceptors
- Elevator Sump Pump Interceptors
- Manual Oil Interceptors
- Advanced Filtration Systems



SSP@SalesServicePlus.com
www.salesserviceplus.com
734-454-7620




HT ESP-INT State of Michigan Product Approval 1633-PA for Hydraulic Elevator Application

30 YEAR WARRANTY



aquatechnik
Innovative Piping Solutions



PPR-CT 125 with W.O.R Technology

- White Oxidative Resistance
- Flame, Fume Free & Lightweight
- Corrosion Resistant & Rust Free
- Higher Temperature & Pressure Rating
- Longer Life Expectancy
- Stability & Reduced Insulation

For more information contact us or your local Sales Representative

1-844-FUSION3 Sales Service Plus
www.aquatechnikna.com 734-454-7620
www.salesserviceplus.com





MIRO INDUSTRIES, INC.

ROOFTOP SUPPORTS

Whether supporting gas or steam lines, HVAC equipment, conduit, ductwork, walkways, bridge or crossover assemblies, MIRO Rooftop Support Products offer both off-the-shelf and custom solutions to meet and exceed your expectations.

LEARN MORE

 miroind.com

 P: 734.454.7620
SSP@SalesServicePlus.com
www.salesserviceplus.com







SENCILLO
SIMPLE.



**Variable Speed Boosters
Just Got A Lot Simpler.**

Manufactured in Horsham PA.



Scan here to learn more about how a Sencillo system can benefit you.



Phone: 734-454-7620
SSP@salesserviceplus.com
www.salesserviceplus.com



ZOELLER
PUMP COMPANY

VP Legislative —Luciana Kayo (continued)

The detail below also indicates how to properly design the sanitary waste system to avoid suds pressure zone issues.

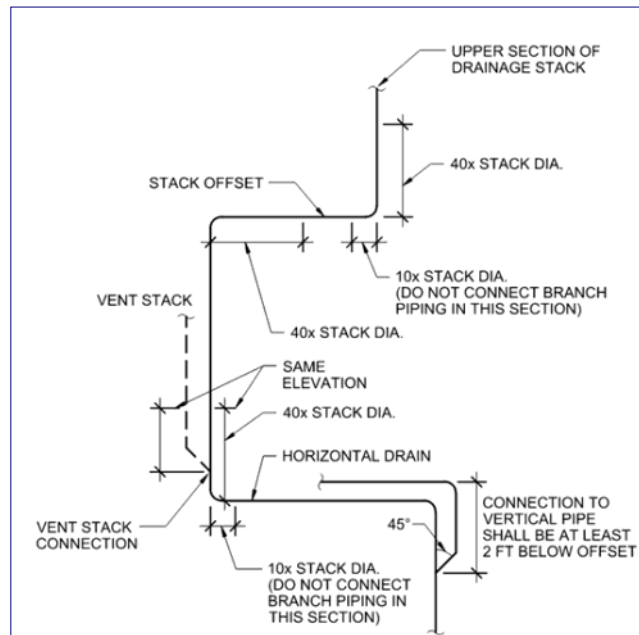


Image source: ASPE Handbook V2.

In summary, understanding suds pressure zones and implementing proper piping strategies are essential in buildings with high suds-producing fixtures. They help prevent foam-related overflows, ensure safe drainage, and support sustainable building operations. Well-planned systems not only meet regulatory standards but also protect health, reduce maintenance, and enhance long-term building performance.

PWT

Programmed Water Technologies

Complete control of
institutional water usage for
maximum safety, savings, &
conservation

SLOAN®

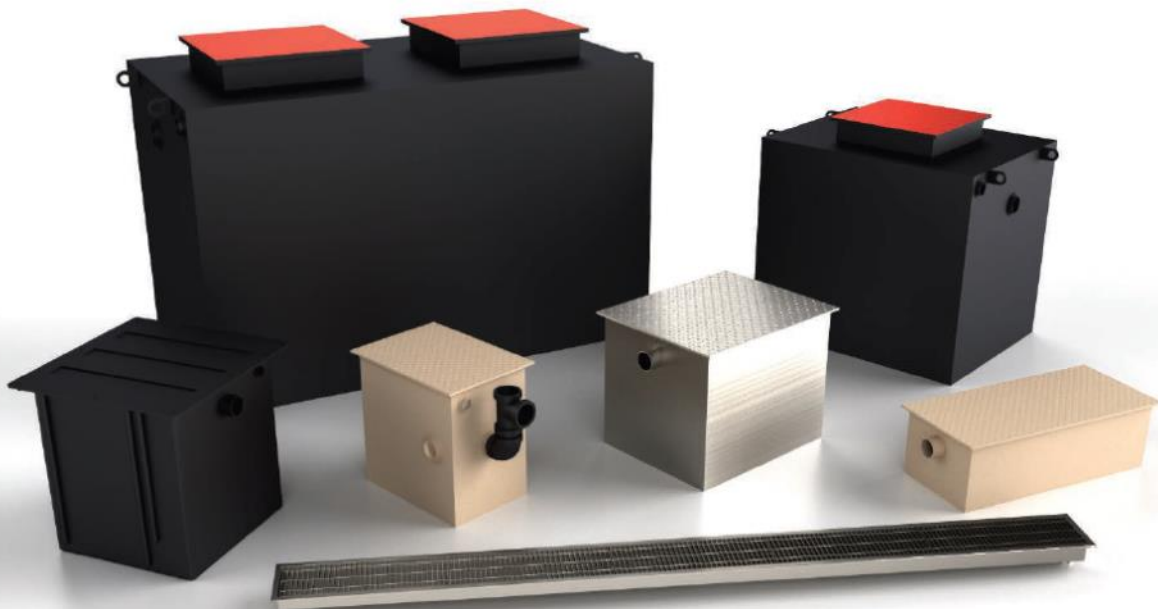
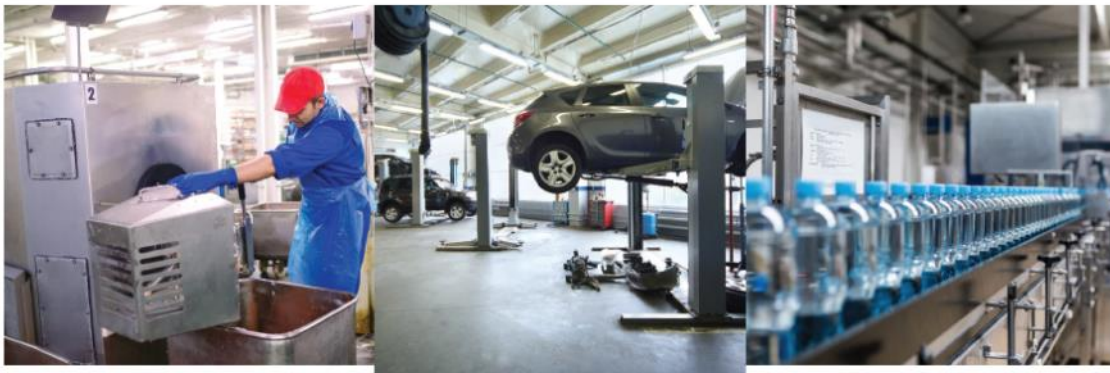
DIVERSIFIED
SPEC. SALES, INC.

Represented by Diversified Spec. Sales, Inc.
www.diversifiedspec.com | 248-398-2400



ROCKFORD SEPARATORS

The Trusted Source for Separators and Drainage Systems for 50 Years



2024-2025 ASPE Western Michigan Meetings

September 4th & 5th
 Tony DeDionisio
 American Gas Safety
 Gas Safety Design

December 12th (Christmas Party)
 Charlie Watson
 Dave Watson and Associates
 Cross Connection Control

March 13th & 14th
 Taylor
 Xylem Pumps
 Pump Sizing & Pressure Loss
 Calculation

October 9th & 10th
 Tyler Oatmen
 Associated Heating Sales
 Commercial Lift Station Design

January 8th & 9th
 Kenyatta Ribeiro
 Oasis International
 Clean Drinking Water Solutions

April 9th & 10th
 Tim Jones
 Steam Basic & Water Hammer

November 20th & 21st
 Jonny Pingry
 Guardian Equipment
 Emergency Eyewash & Safety Showers

February 12th & 13th
 Trent Sorenson
 Striem Manufacturing
 Design and Sizing of Oil Interceptors

May 7th & 8th
 Dave Harth
 Hedrick
 Instantaneous Water Heaters &
 Heat Pump Technologies

May 19th
 ASPE Annual Golf Outing

2024-2025 ASPE Western Michigan Chapter Board

PRESIDENT
 Brian Peceny
 Progressive AE
 (616) 365-6541
 pecenyb@progressiveae.com

VP—MEMBERSHIP
 John Cassidy
 AirTech Equipment
 (616) 648 7703
 Jcassady30@gmail.com

EVENT COORDINATOR
 Breanna Kooiman
 Progressive AE
 (616) 988-4854
 kooimanb@progressiveae.com

TREASURER
 Chuck Shoudel, CPD, GGP
 Abonmarche Byce
 (269) 488-7195
 cshoudel@abonmarche.com

ADMINISTRATIVE SECRETARY
 Travis Smith, CPD
 Progressive AE
 (616) 988-4862
 smitht2@progressiveae.com

BOARD ADDRESS:
 ASPE Western Michigan
 P.O. Box 150047
 Grand Rapids, MI 49515
 aspewestmichigan@gmail.com

VP—TECHNICAL
 Nick Von Myhr
 GMB
 (616) 322-4713
 nickv@gmb.com

CORRESPONDING SECRETARY
 Jonathan Burke
 Burke Agency
 (616) 217-1399
 jmburke@burkeagency.com

VP—EDUCATION
 Tom Kingshott, CPD, GPD
 Progressive AE
 (616) 361-2664
 kingshottt@progressiveae.com

VP—LEGISLATIVE
 Luciana Kayo, CPD
 Comprehensive Engineering
 (616) 737-9227
 lucianak@compeng.com

ASPE Newsletter Editor — Jonathan Burke — jmburke@burkeagency.com

Update your specifications! The NEW EZH20 is here!

Single Old #	New	Bilevel Old #	NEW
LZS8WSLP	LZS8WSSP	LZSTL8WSLP	LZSTL8WSSP

FEATURES:



FASTER FILTER CHANGES



VISUAL FILTER MONITOR



AUTOMATIC FILTER RECOGNITION

Available on LZS8WSSP and LZSTL8WSSP



ENHANCED EZH20® BOTTLE FILLING STATION

with Quick Filter Change Wrapper

The bottle filling design features a drop-down cooler wrapper for quick, convenient filter changes. Standard on both single and bi-level units, the stainless steel wrapper provides quick access to the filter, water shut-off valve and power supply without removing the entire wrapper.

ELKAY

STANDARD Features:

- **Quick Filter Change Wrapper** allows for drop down access to filter, chiller and waste water and electrical connections in less than 30 seconds. All panels are stainless steel and tamper resistant.
- **6,000 Gallon** capacity NSF / ANSI 42 & 53 lead filter (51600C)
- **Same waste, water, electrical connection location and dimensions as previous models**
Available with **OPTIONAL** 2,250 Gallon capacity **PFOS & PFOA** reduction filter **SUFFIX (-PF)**

Upgrade legacy installed EZH20 units with side filter access lower wrappers and upgraded filtration:

EZFMK Filter Maintenance Kit Single	EZFMTLK	Filter Maintenance Kit (Bilevel)
51600C 6,000 Gallon Replacement Filter	71300C	2,250 Gallon PFOS / PFOA Filter

Schedule a lunch and learn with us to discuss the innovative new products from ElKay.

filterfirst@balfrey-johnston.com phone:313-864-2800



Lloyd Cooper
 Manufacturers Representative
 Plumbing and Heating Products
 LloydC@jwsalesinc.net
 orders@jwsalesinc.net

1774 W Tuttle Rd
 Ionia, MI 48846
 (248) 745-8590
 CELL (616) 273-0992
 www.jwsalesinc.net



Tim Jones
 Technical Manager
 Great Lakes Region

816 Maple Street
 Three Rivers, MI 49093 - U.S.A.
 Direct Phone: (269) 279-3104
 Mobile Phone: (269) 532-4441
 tjones@armstronginternational.com
 armstronginternational.com

Intelligent System Solutions STEAM • AIR • HOT WATER




New Century Sales, Inc.
 Manufacturer's Representatives

550 36th St. SE
 Grand Rapids, MI 49548

Michael Zago
 Principal
 D (616) 600-9660 x 107
 C (616) 293-2121
 E mikez@newcenturysales.com

Trevor Montag
 Hydronic Resource Specialist
 D (616) 600-9660 x 117
 C (734) 673-2119
 E trevorm@newcenturysales.com



Commercial - Industrial
 Plumbing - Heating
 Sheetmetal
 Design - Build
 Process Piping

NORTHWEST KENT MECHANICAL CO.
 P.O. Box 216K · 4095 16 Mile Rd.
 Cedar Springs, Michigan 49319
 www.nwkentmech.com

(616) 696-9026
 FAX (616) 696-9327

Bill Rohen 616.286.0000 - m

TAGGART-KNIGHT

Manufacturers' Representative
 Jenison, Michigan 49428
 616.286.0000 - office
 www.taggartknight.com

bill.rohen@taggartknight.com



DIVERSIFIED
 SPEC. SALES, INC.

Matt Sleper
 msleper@dsshowley.com
 O: 616.785.9000
 C: 269.267.2401
 317 32nd St., SW,
 Grand Rapids, MI 49548
 www.diversifiedspec.com



DIVERSIFIED
 SPEC. SALES, INC.

Shawn Olger
 solger@dsshowley.com
 O: 616.785.9000
 C: 616.799.0450
 317 32nd St., SW,
 Grand Rapids, MI 49548
 www.diversifiedspec.com

Jonathan M. Burke



BURKE AGENCY
MANUFACTURERS' REPRESENTATIVE

Cell: (616) 217-1399

IMMEDIATE IMPACT. LASTING RELATIONSHIPS. EXTRAORDINARY RESULTS.



Mechanical
Electrical
Structural
Civil

Comprehensive Engineering
4650 Plainfield Ave NE
Grand Rapids, MI 49525

Tel: (616) 365.9933
www.compeng.com

Aaron Burrows
West MI Territory Manager



13050 Northend Ave. Oak Park
Cell: 231-292-6400
Office: 313-864-2800
aburrows@balfrey-johnston.com

Serving the Construction Industry since 1959
<https://www.balfrey-johnston.com/>



Brian Underhill
Applications Engineer
Cell 616-292-7194
bunderhill@fliersinc.com

PURE engineering. PURE service. PURIFICATION.

7425 Clyde Park SW | Byron Center, MI 49315
Ph 616-583-9040 Ext 126 | 800-898-5525 | Fx 616-583-1230

Jeremy Martin
Regional Sales Manager

jmartin@highlandtank.com

4701 White Lake Road
Clarkston, MI 48346
260.704.1857



SALES SERVICE PLUS, INC.
Manufacturers Representatives



Dustin Gardner
Territory Manager

"SERVICE IS OUR MIDDLE NAME"

45606 Mast Street, Plymouth, MI 48170 (734) 454-7620 EXT 128
DGardner@SalesServicePlus.com (734) 454-7632
www.SalesServicePlus.com (616) 273-1999



ASSOCIATED HEATING SALES

TYLER OATMEN
WEIL & WILO PUMP REPRESENTATIVE

Associated Heating Sales
Lift Station Sales and Design

6718 Woodhills Dr. NE
Rockford MI 49341
(616) 241.3622
Sales@AHSpumps.com



www.ahspumps.com



Western Michigan Chapter

Help promote your business and support your local ASPE chapter by advertising in the 2024/2025 Western Michigan ASPE Society Newsletter which reaches local plumbing and mechanical engineers as well as local wholesale members. Choose the advertising level that best suits your needs. This increase in publicity for your company will be an asset for all parties involved.

Business card: \$150

Manufacturer Ads:

1/8 Page \$260

1/4 Page \$475

Full Page \$880

Included with your fee:

(9) issues of the newsletter

(9) inserts of the Business Card Ad in the newsletter

ASPE will once again be allowing you to rotate your advertisement throughout the year! If you wish to change your ad during the 2024/2025 session, email the new ad to me, and it will be changed in the following newsletter.

Advertising space can be purchased on the West Michigan ASPE website:

[Click here to purchase advertising space in the 2024/2025 newsletter](#)

Please send a copy of your ads and/or business cards to Jonathan Burke:

Phone: (616) 217-1399 Email: jmburke@burkeagency.com

Thank you for supporting your local ASPE chapter.