



# Newsletter

## Western Michigan Chapter

### October 2021

## WESTERN MICHIGAN

**This months Meeting info:** [Lunch Meeting Information:](#) [Dinner Meeting Information:](#)

**Date:**

**Lunch: Oct. 14th**

**Dinner: Oct. 21st**

**Location:**

**Park Club of Kalamazoo  
219 W. South Street  
Kalamazoo , MI 49007**

**Location:**

**Stone Water Country Club  
7177 Kalamazoo Ave SE  
Caledonia, MI 49316**

**Speaker:**

**Scott Young  
Zurn**

**Time:**

**Noon to 1PM**

**Time:**

**5:30 PM followed by dinner**

**Subject:**

**Roof drain sizing to meet  
the updated IPC code**

**Cost:**

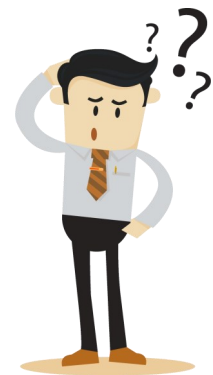
**\$25 per person**

**Cost:**

**\$30 per person**

## Important Information!

**The lunch and dinner meetings will be on different days this month. The lunch meeting will be on October 14th. The dinner meeting will be on October 21st.**



***DON'T GET CONFUSED!***

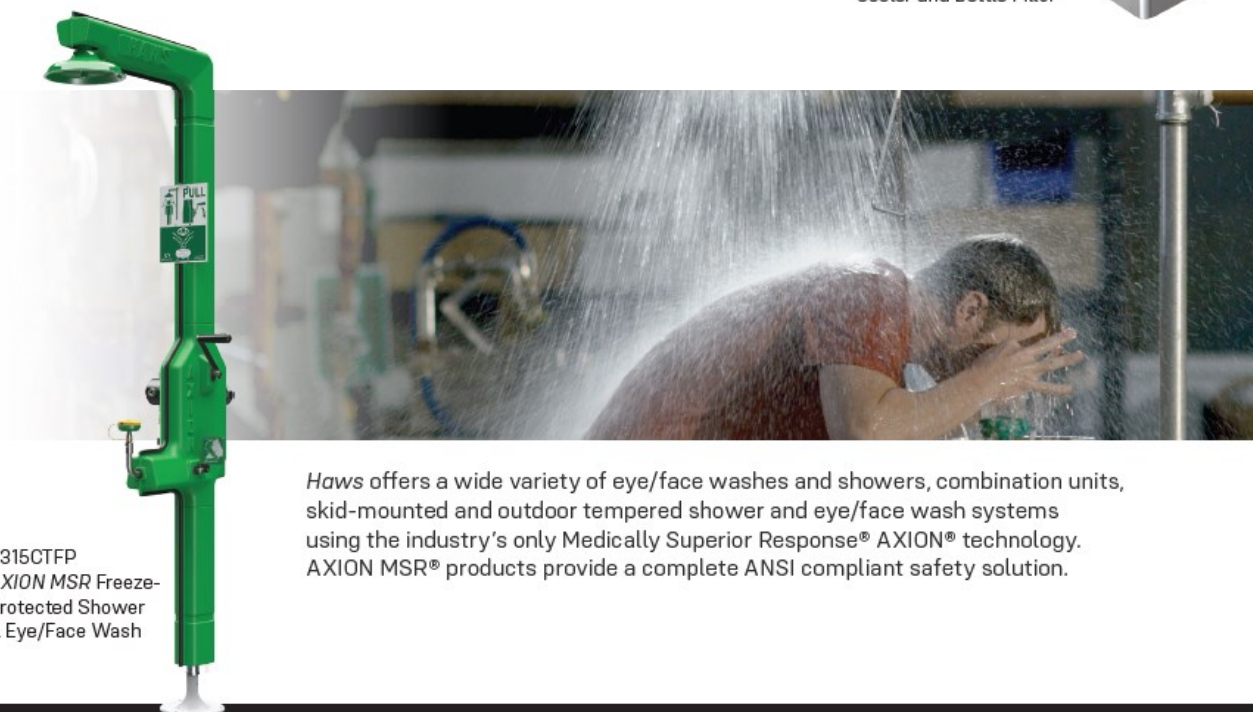
# SAFETY OR HYDRATION – HAWS® IS THERE FOR YOU



Haws offers a wide variety of motion-activated hydration options for sanitary use in public places.

With an optional bubbler head deactivation feature, easily maneuver between functional and non-functional use at your convenience to meet building ADA compliance requirements.

1212SFH  
ADA Touchless Water  
Cooler and Bottle Filler



8315CTFP  
AXION MSR Freeze-  
Protected Shower  
& Eye/Face Wash

Haws offers a wide variety of eye/face washes and showers, combination units, skid-mounted and outdoor tempered shower and eye/face wash systems using the industry's only Medically Superior Response® AXION® technology. AXION MSR® products provide a complete ANSI compliant safety solution.

Represented in Michigan by:  
Taggart-Knight Group • Farmington Hills, MI 48331  
[www.taggartknight.com](http://www.taggartknight.com) • [info@taggartknight.com](mailto:info@taggartknight.com)



## Chapter President—Tom Kingshott

Happy Fall! We are looking forward to continuing our in-person meetings in Kalamazoo this week and Grand Rapids next week.

We are working on a new web site that will incorporate a meeting sign-up and credit card payment system that should make registering for our meetings easier; this will hopefully be ready by the end of the year.

---

## VP Technical — Chuck Shoudel

It was definitely nice to see everyone in person last month. This month we will have Scott Young with Zurn drainage flying in for both the October 14th meeting in Kalamazoo and October 21st meeting in Caledonia. Due to a scheduling issue with our venue, we had to push the Caledonia meeting a week. Scott will be discussing Roof drain sizing to meet the updated IPC code. I look forward to seeing everyone on the 14th and the 21st.



**New Century Sales, Inc.**  
Manufacturer's Representatives




**COPPERPRESS® SYSTEM BENEFITS**

- Size range from 1/2" to 4"
- Green visual application bands
- Consistent wall thickness on all products
- Leak before press systems
- Less equipment required
- Compatibility of fittings and tools

[www.copperpress.com](http://www.copperpress.com)

**Approvals & Certifications**

- NFS ANSI/CAN 61
- UPC
- cUPC
- IPC
- IAPMO PS-117
- ICC-ES-PMG
- ASME B16.51





**ISOTUBIUSA**

Stainless Steel Press Solutions

Represented by New Century Sales:

<p><b>WEST MICHIGAN</b> Michael Zago C (616) 293-2121 E mikez@newcenturysales.com</p>	<p><b>WEST MICHIGAN</b> Rod Cox C (616) 706-1481 E rodc@newcenturysales.com</p>	<p><b>EAST MICHIGAN</b> Todd Hiler C (513) 633-2609 E toddh@newcenturysales.com</p>	<p><b>EAST MICHIGAN</b> Ross Beck C (734) 673-2119 E rossb@newcenturysales.com</p>
---	---	---	--

<https://isotubi-usa.com>

[www.newcenturysales.com](http://www.newcenturysales.com)



## Dependable. Efficient. Indispensable. (Our products *really* are a lot like you, come to think of it.)

Diversified Spec. Sales, Inc. recognizes the vital role plumbing engineers play in the health and well-being of our society; none of us can exist without clean water. As we depend on you to design plumbing systems designed for today's needs, it is our pleasure to offer you innovative, state-of-the-art product solutions of tomorrow, coupled with the rugged durability of yesteryear.

We carry thousands of products designed to help you achieve the outcomes your project demands. Visit us online to explore our line card or contact us directly to learn how we help you specify products that meet the highest of standards — *your own*.

VISIT US ONLINE:  
[diversifiedspec.com](http://diversifiedspec.com)

**Eastern MI Office:**  
13261 Northend Ave.,  
Oak Park MI 48237  
p: 248.398.2400

**Western MI Office:**  
931 West River Center Dr.,  
Comstock Park, MI 49321  
p: 616.785.9000



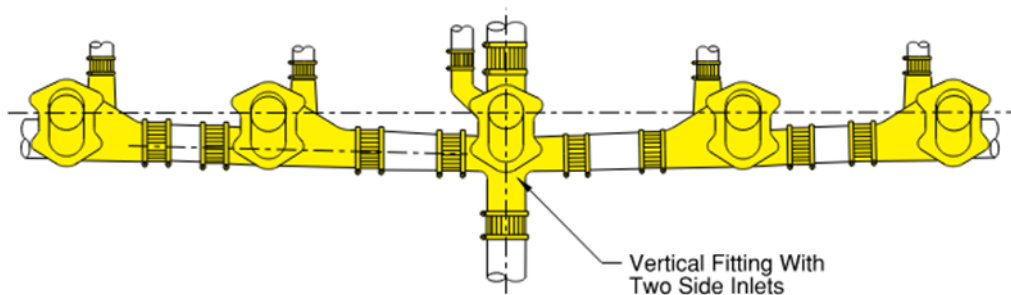
**Diversified**  
SPEC. SALES, INC.

## VP Legislative —Bryan Peceny

Last month we had the pleasure to welcome Mr. Chris Rylant Jr. with J.R Smith company to speak at our first lunch and dinner meetings of the year. Chris spoke on fixture carriers, specifically water closet fixture carriers. I expect our plumbers and representatives are very familiar and knowledgeable about these products, but how about the design engineer? Are they just noted in our specifications? Do you use them in your Revit models?

What does it do? It carries a wall mount water closet (class over). But what else is there to know? I just looked at the J.R. Smith web site, and they have 60 models or “figures” to view. Who knew there were so many options? We don’t have time to get into that level of detail, but I do want to highlight a few points.

- First, why use carriers? Most typically it’s to offer a clean restroom design that architects and owner like. Most important is that wall mount fixtures offer easy floor cleaning. Very common where we have a bank of fixtures.
- Why not always use carriers? We’ll, you’ll need to pay for the carrier, you’ll need space to place the carrier (chase), and a floor mount unit will typically carry more weight where we want to avoid bariatric design options.
- Types; Siphon jet and blowout. Make sure your specified carrier matches the water closet type you are using. These will have different bolt connections.
- Left hand or right hand: When looking at the fixtures, the carrier is defined by which side of the stack the fixture is mounted (not flow direction).
- Auxiliary connections: Great for vent connections, but also can be used for secondary drain (maybe urinal). In a wet chase I personally like to vent each closet, though we could use circuit venting.
- Battery Length: This can also vary, but most manufactures will recommend 6 carriers (potentially up to 8) on each side of the waste stack. This will account for the required horizontal pipe slope from furthest fixtures to the stack. If you are mounting two ADA height fixtures at the end of the line and since these mount higher, you can have the higher limit of fixtures on that battery. CHECK with the manufacturer before you assume the number.
- Adjustable height: You can adjust the trim plate between ada and standard height (or other). This in turn gets mounted to the carrier body. Note that the body connection and gasket are really a flat oval and not round, giving you flexibility.



- Floor support: Each fixture carrier has a pair of legs at the front that are the main support for the fixture and assembly. For back-to-back, there are legs on both sides, for a total of four anchor points. These get bolted to the floor. When using a single fixture carrier, there typically is an extra support lug

## VP Legislative —Bryan Peceny (continued)

on the back of the carrier. This should also be used, typically connected with threaded rod to a small foot that is anchored to the floor.

- How much chase space is required? I could tell you hear, but I sense a law suite coming. Refer to your typical manufacturer guides. It will depend on single carrier or back-to-back; horizontal or vertical, wall construction type. Just make sure your architect has given you the space.
- Feeling stressed, let the carrier carry that weight.

---

## VP Membership — John Cassady

Hello ASPE Members,

We are currently at 77 members in our chapter. I would like to extend a welcome to our two newest members, Sarah Tyler with Century AE and Katy Beckstrom with Tower Pinkster. For those of you that have a membership expiring by the end of October, you should have received an email reminder from the national society already. I will be sending out follow-up reminders this week.

If you have a coworker that is interested in joining our chapter, please have them reach out to me for membership.

Congratulations to our Rep of the Month, Cindy Zatto!





**EAST MICHIGAN**  
1715 Traditional Dr.  
Commerce Township, MI 48390  
P (248) 960-1147 F (248) 960-1149

**WEST MICHIGAN**  
550 36th St. SE  
Grand Rapids, MI 49548  
P (616) 600-9660

<https://www.americanstandard-us.com/professionals/architect-designer>  
(Kitchen & Bathroom)

[www.amtrol.com](http://www.amtrol.com)  
(Expansion Tanks)

[www.bascoshowerdoor.com](http://www.bascoshowerdoor.com)  
(Shower Doors)

[www.bradleycorp.com](http://www.bradleycorp.com)  
(Washroom Solutions)

[www.caleffi.com/usa/en-us](http://www.caleffi.com/usa/en-us)  
(Hydronic Accessories)

[www.copperpress.com](http://www.copperpress.com)  
[www.isotubi-usa.com](http://www.isotubi-usa.com)  
(Plumbing Fittings)

[www.fiatproducts.com](http://www.fiatproducts.com)  
(Shower Floors)

<https://www.grohe.us/customize/architects-and-designers>  
(Faucets)

[www.ibcboiler.com](http://www.ibcboiler.com)  
(Boilers)

[www.justmfg.com](http://www.justmfg.com)  
(Stainless Steel Sinks)

[www.femyers.com](http://www.femyers.com)  
(Water and Waste Pumps)

[www.oasisbath.com](http://www.oasisbath.com)  
(Fiberglass & Acrylic Tub & Showers)

[www.oasiscoolers.com](http://www.oasiscoolers.com)  
(Water Filtration Coolers)

[www.oatey.com](http://www.oatey.com)  
(Cherne, Dbn Brass, Harvey & Hercules)

<https://na.panasonic.com/us/home-living-solutions/ventilation-indoor-air-quality/>  
(Bath Fans)

[www.rehau.com/us-en](http://www.rehau.com/us-en)  
(PEX Plumbing Products)

[www.rheem.com](http://www.rheem.com)  
(Water Heaters)



**Represented by New Century Sales:**

**WEST MICHIGAN**  
Michael Zago  
C (616) 293-2121  
E [mikez@newcenturysales.com](mailto:mikez@newcenturysales.com)

**WEST MICHIGAN**  
Rod Cox  
C (616) 706-1481  
E [rodcd@newcenturysales.com](mailto:rodcd@newcenturysales.com)

**EAST MICHIGAN**  
Todd Hiler  
C (513) 633-2609  
E [todhd@newcenturysales.com](mailto:todhd@newcenturysales.com)

**EAST MICHIGAN**  
Ross Beck  
C (734) 673-2119  
E [rossb@newcenturysales.com](mailto:rossb@newcenturysales.com)

## 2021-2022 ASPE Western Michigan Meetings

September 9th  
Matt Sleeper  
J.R. Smith  
Requirements for Lavatory, Drinking  
and Water Closet Fixture Carriers

December 9th (Christmas Party)  
Matt Lawrence  
Clarion Bathware  
Accessible Bathtubs and Showers

March 10th  
Mark Stone  
EMGS  
Medical Gas Systems

October 14th (lunch)  
October 21st (dinner)  
Brandon Dawe / Dale Sheehy  
Balfrey & Johnson  
Roof Drain Sizing to meet the updated  
IPC code

January 13th  
Ray Kennedy  
KSI Kennedy Solutions  
Codes and Standards for Selection  
and Installation of Grease  
Interceptors and Oil Separators

April 14th  
Dave Shugars  
RL Deppmann  
Domestic Hot Water Recirculating  
Systems

November 11th  
Tim Jones  
Armstrong International  
Pipe Up - Leading Edge Prospective On  
Best In Class Domestic Hot Water  
System Design

February 10th  
Samantha Hoch  
Haws  
Simplified Guide to ANSI/ISEA  
Z358.1 (.10 CEU) - Emergency  
Eyewash and Showers

TBD  
ASPE Annual Golf Outing

## 2021-2022 ASPE Western Michigan Chapter Board

### PRESIDENT

Tom Kingshott, CPD, GPD  
Progressive AE  
(616) 361-2664  
kingshottt@progressiveae.com

### VP—MEMBERSHIP

John Cassidy  
AirTech Equipment  
(616) 648 7703  
Jcassady30@gmail.com

### HISTORIAN

Gordon L. Berridge  
Integrated Architecture  
(616) 813 6203  
gberridge@INTARCH.com

### VP—TECHNICAL

Chuck Shoudel, CPD, GGP  
Byce & Associates  
(269) 488-7195  
chuck.shoudel@byce.com

### TREASURER

Don Glennie, CPD  
(616) 456-9944  
dglennie58@gmail.com

### AYP LIAISON

Luciana Kayo, CPD  
Comprehensive Engineering  
(616) 737-9227  
lucianak@compeng.com

### VP—EDUCATION

Nick Von Myhr  
GMB  
(616) 322-4713  
nickv@gmb.com

### ADMINISTRATIVE SECRETARY

Travis Smith, CPD  
Progressive AE  
(616) 988-4862  
smitht2@progressiveae.com

### EVENT COORDINATOR

Ashley Smith, P.E.  
E3M Solutions  
(616) 446-9005  
asmith@e3msolutions.com

### VP—LEGISLATIVE

Brian Peceny  
Progressive AE  
(616) 365-6541  
pecenyb@progressiveae.com

### CORRESPONDING SECRETARY

Jonathan Burke  
Burke Agency  
(616) 217-1399  
jmburke@burkeagency.com

### BOARD ADDRESS:

ASPE Western Michigan  
P.O. Box 150047  
Grand Rapids, MI 49515  
aspewestmichigan@gmail.com

# ARMSTRONG INTRODUCES THE RADA DIGITAL FAUCET

**A SUPERIOR LEVEL OF HANDWASHING SAFETY AND INFECTION CONTROL,  
FROM THE WORLD LEADER IN DIGITAL WATER TEMPERATURE TECHNOLOGY.**

Armstrong brings the unparalleled accuracy, stability and safety of The Brain® Digital Recirculation Valve to a point-of-use solution—engineered to mitigate the growth and spread of waterborne pathogens and minimize the risk of scalding injury.



Rada Digital Faucets are an essential component of Armada<sup>SM</sup>—a total, state-of-the-art hot water system engineered to deliver a superior level of user safety, infection control and compliance, from mechanical room to the point of use.

Please contact Merlo Energy at 1-800-968-1195



A MEMBER OF THE KENDALL GROUP



## AYP Liaison — Luciana Kayo

Happy fall everyone!

We have prepared a sample test for those who are taking the CPDT exam this month to test their knowledge!

Note that these questions do not represent the full range and difficulty of the actual exam. All questions have been developed from content on the ASPE Handbooks. Answers can be found at the end of the newsletter. Good luck!

1. A branch interval is a distance between two branch connections that is \_\_\_\_\_ feet or more.
  - A. 6
  - B. 7
  - C. 8
  - D. 9
  
2. Prior to start designing a plumbing system for an existing building, what information an engineer should gather? Select the best answer.
  - A. A complete set of work plans, as-builts if available, scope of work.
  - B. Name of architect and plumbing engineer who designed the original building.
  - C. Site survey including all existing utilities and water flow test.
  - D. List of operational issues such as inadequate pressure, delay in hot water delivery to fixtures, water hammer, leaks, etc.
  
3. A building has a roof that is 120 ft x 65 ft and has two roof drains and two overflow drains. The building is situated in an area with 100-year rainfall rate of 3 in/hr. What is the calculated flow rate in gpm of storm drain leaving the building? Select the best answer.

Assumptions: the roof is flat and there are no other buildings nearby; there is only one storm drain leaving the building.

  - A. 122
  - B. 215
  - C. 247
  - D. 273
  
4. How is it called the specification that involves the use of a requirements written by nationally or internationally recognized organization such as ASTM, ASHRAE, UL, etc. to specify a product, materials, or method?
  - A. Reference standard specification
  - B. Proprietary specification
  - C. Performance specification
  - D. Descriptive specification
  
5. Which pump is used to increase a building's domestic water pressure when the Municipal main has insufficient pressure?
  - A. Water circulation pumps
  - B. Booster pumps
  - C. Fire pumps
  - D. Sump pumps

## AYP Liaison — Luciana Kayo (continued)

6. In a waste stack offset greater than 45 degrees, a suds pressure zone extends \_\_\_\_ stack diameters upward and \_\_\_\_ stack diameters horizontally.

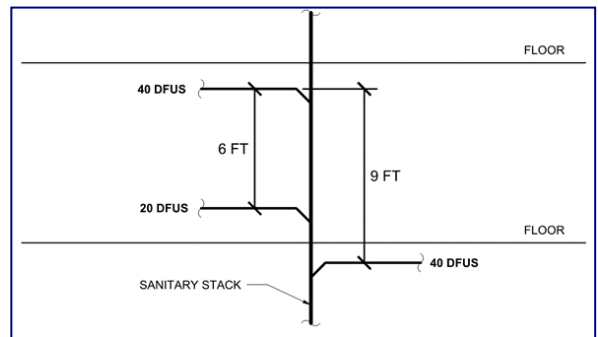
- A. 30, 10
- B. 30, 20
- C. 40, 10
- D. 40, 20

7. Which is not a renewable energy resource?

- A. Solar energy
- B. Natural gas
- C. Geothermal energy
- D. Biogas

8. How many drain fixture units does this branch interval have?

- A. 20
- B. 40
- C. 60
- D. 100



9. The most common form of backflow protection for faucets not having an air gap is the use of a \_\_\_\_\_.

- A. Check valve.
- B. Vacuum breaker.
- C. Shut-off valve.
- D. Air break.

10. The owner of a building asks for help in selecting a water heater for an addition. The estimated one-hour peak hot water demand for the facility is 170 gallons and he wants a gas-fired water heater. Assuming the temperature of incoming water is 40 °F, the water heater will be set at 120 °F, and there are no heat losses, calculate the minimum required natural gas input in BTU/HR for a water heater with 90% efficiency. Choose the most approximate answer.

Equation:  $BTU = GPH \times 8.33 \times \Delta T(^{\circ}F)$

- A. 110,000 BTU/HR
- B. 115,000 BTU/HR
- C. 120,000 BTU/HR
- D. 125,000 BTU/HR

Answers on the last page of the newsletter...



# BURKE AGENCY INC.

MANUFACTURERS' REPRESENTATIVE

**METRO DETROIT**  
2605 E. Oakley Park Rd. Ste. A  
Commerce Twp, MI 48390  
P: 248.669.2800  
F: 248.669.3310

**GRAND RAPIDS**  
8593 Commerce Drive SW  
Byron Center, MI 49315  
P: 616.878.7300  
F: 616.583.1239

burkeagency.com



Residential and commercial toilet seats  
[bemisseats.com](http://bemisseats.com)



Residential and commercial water heaters, boilers, tankless  
[bradfordwhite.com](http://bradfordwhite.com)



Stops and supplies, gas connectors, fittings, plumbshop  
[brasscraft.com](http://brasscraft.com) [plumbshop.com](http://plumbshop.com)



Fashion-forward kitchen and bath faucets, shower systems  
[brizo.com](http://brizo.com)



Residential and commercial pipe & fittings, PVC, cast iron, CPVC  
[charlottepipe.com](http://charlottepipe.com)



Residential and commercial faucets, showers, Peerless Faucet  
[deltafaucet.com/for-professionals](http://deltafaucet.com/for-professionals)



Residential and commercial faucets, shower systems, Axor  
[hansgrohe-usa.com](http://hansgrohe-usa.com)



Garbage disposers, hot water dispensers, commercial  
[insinkerator.emerson.com](http://insinkerator.emerson.com)



Pipe cements, washing machine boxes, TrueBro, Studor  
[ipscorp.com](http://ipscorp.com)



Thermostatic mixing valves, emergency shower and eye wash  
[temperedwater.com](http://temperedwater.com)



High efficiency hydronic boilers and volume water heaters  
[laars.com](http://laars.com)



Maax acrylic, Aker fiberglass bathware  
[americanbathgroup.com](http://americanbathgroup.com)



Gel coat and acrylic bathware  
[americanbathgroup.com](http://americanbathgroup.com)



Bath and kitchen solid surfacing products  
[americanbathgroup.com](http://americanbathgroup.com)



Power tools and accessories for plumbing and HVAC  
[milwaukeetool.com](http://milwaukeetool.com)



Copper and NativeStone concrete lavs, sinks, and tubs  
[nativetrails.net](http://nativetrails.net)



Condensate neutralizers for HE boilers and water heaters  
[neutrasafe.com](http://neutrasafe.com)



Residential and commercial fixtures, washlet bidet seats  
[totousa.com](http://totousa.com)



CounterStrike CSST flexible gas pipe and fittings  
[omegaflex.com](http://omegaflex.com)



AquaPEX plumbing pipe and ProPEX expansion fitting system  
[uponor-usa.com](http://uponor-usa.com)



Pipe support systems, clamps and accessories, PEX-Straight  
[walraven-usa.com](http://walraven-usa.com)



Watco manufactures innovative bath waste solutions  
[watcomfg.com](http://watcomfg.com)



Hose connected hydrants  
[woodfordmfg.com](http://woodfordmfg.com)



**JW SALES, INC.**  
Dave Sweany  
West Michigan  
(616) 540-4693

Manufacturers Representative

- Chicago Fittings
- Elcoma
- Environmental Water Systems
- Krowne Metals
- Legend
- Liberty Pump
- Nortiz Tankless Water Heaters
- Slant Fin Boilers & Baseboard

1570 E. Highwood Pontiac, MI 48340 O:(248) 745-8590 F: (248) 745-0889 www.jwsalesinc.net



**Armstrong®**

**Tim Jones**  
Technical Manager  
Great Lakes Region

816 Maple Street  
Three Rivers, MI 49093 - U.S.A.  
Direct Phone: (269) 279-3104  
Mobile Phone: (269) 532-4441  
tjones@armstronginternational.com  
armstronginternational.com

**Intelligent System Solutions** STEAM • AIR • HOT WATER



**Diversified**  
SPEC. SALES, INC.

**Shawn Olger**  
cell: 616.799.0450  
office: 616.785.9000  
solger@dsshowley.com

931 West River Center Dr, Comstock Park, MI 49321  
p: 616.785.9000 f: 616-785-7347  
www.diversifiedspec.com



**New Century Sales, Inc.**  
Manufacturer's Representatives  
550 36th St. SE  
Grand Rapids, MI 49548

**Michael Zago**  
Principal  
D (616) 600-9660 x 107  
C (616) 293-2121  
E mikez@newcenturysales.com

**Rod Cox**  
Principal  
D (616) 600-9660 x 116  
C (616) 706-1481  
E rodc@newcenturysales.com




**NORTHWEST KENT MECHANICAL CO.**  
P.O. Box 216K · 4095 16 Mile Rd.  
Cedar Springs, Michigan 49319  
www.nwkentmech.com

Commercial - Industrial  
Plumbing - Heating  
Sheetmetal  
Design - Build  
Process Piping


(616) 696-9026  
FAX (616) 696-9327

**DWA** **DAVE WATSON ASSOCIATES, INC.**  
Manufactures` Representatives



**LE** ultra pure water system, LabWaste high temp corrosive waste DWV system, CPVC / PVC pipe, valves and fittings. Ames / Febco backflow, pressure - temperature regulation. Mueller strainers and valves.

**OFFICE (800) 589-5595** **CELL (616) 828-8309**  
**CHARLIE WATSON** **EMAIL CWATSON@DAVEWATSON.BIZ**



**DEPPMANN**

4121 Brockton Dr. SE  
Grand Rapids, MI 49512-4050  
Phone (616)656-0821  
Toll Free (800) 589-8301

Tim Dawson  
Todd Dopkowski  
Nathan Oliver

Jim Raley  
Dan Ondersma  
Dave Shugars

**TEAM SOLUTIONS FOR THE HYDROINC AND STEAM INDUSTRY**



**Diversified**  
SPEC. SALES, INC.

**Matt Sleper**  
cell: 269.267.2401  
office: 616.785.9000  
msleper@dsshowley.com

931 West River Center Dr, Comstock Park, MI 49321  
p: 616.785.9000 f: 616-785-7347  
www.diversifiedspec.com

**Jonathan M. Burke**



**BURKE AGENCY INC.**  
MANUFACTURERS' REPRESENTATIVE

Cell: (616) 217-1399

---

IMMEDIATE IMPACT. LASTING RELATIONSHIPS. EXTRAORDINARY RESULTS.



**Environmental Medical Gas Services Michigan LLC**  
5402 Rusche Dr., NW • Comstock Park, MI 49321

**Mark Stone**  
Sales

Office (616) 785-4188 • Fax (616) 785-4199 • Cell (616) 262-0124  
mstone@emgsm.com • www.emgsm.com





**balfrey & johnston, inc.**  
MANUFACTURER'S REPRESENTATIVE  
Serving the Construction Industry Since 1959

**Dale Sheehy**

13050 Northend Ave.  
Oak Park MI 48237  
dsheehy@balfrey-johnston.com  
www.balfrey-johnston.com

PHONE: 313-864-2800  
FAX: 313-864-7219  
MOBILE: 231-578-2011

**Representing:**

- Armstrong Fluid Technology
- BoilerMag
- Centrotherm
- Chromalox
- CircuitSolver
- Dalek / Fleuro
- Elkay / Halsey Taylor
- Field Controls
- Guardian Safety
- iFLOW
- Jones Stephens
- Kemper Valve
- Leonard Valve
- Navien
- NewAge Castings
- Perfect Aire
- PVI
- RectorSeal
- Sentinel
- Stern-Williams
- Willoughby Industries
- Zimet Industries
- Zum
- Zum Wilkins



**Mechanical**  
**Electrical**  
**Structural**  
**Civil**

---

**Comprehensive Engineering**  
4653 Plainfield Ave NE  
Grand Rapids, MI 49525

Tel: (616) 365.9933  
www.compeng.com

*Bill Rohen*  
Jenison, MI

**Taggart-Knight**  
Manufacturers' Representatives Group

37686 Enterprise Ct.  
Farmington Hills, MI 48331  
P 248.553.4388 F 248.553.4653  
Mobile 616.286.0000  
bill.rohen@taggartknight.com

**SALES SERVICE PLUS, INC.**  
Manufacturers Representatives



**Aaron Sturos**  
Sales Enginner

"SERVICE IS OUR MIDDLE NAME"

45606 Mast Street, Plymouth, MI 48170 (734) 454-7620 EXT 106

ASturos@SalesServicePlus.com (734) 454-7632

www.SalesServicePlus.com

**V. E. Sales Co., Inc.**  
Manufacturers' Representative

**Cindy Zatto**  
Sales Representative

25200 Jefferson Ave.  
Saint Clair Shores, MI 48081  
586-774-7760 (office)  
810-343-2713 (cell)  
cindy@vesalesinc.com



www.vesalesinc.com



## Western Michigan Chapter

Help promote your business and support your local ASPE chapter by advertising in the 2021/2022 Western Michigan ASPE Society Newsletter which reaches local plumbing and mechanical engineers as well as local wholesale members. Choose the advertising level that best suits your needs. This increase in publicity for your company will be an asset for all parties involved.

**Business card: \$150**

**Manufacturer Ads:**

**1/8 Page \$260**

**1/4 Page \$475**

**Full Page \$880**

Included with your fee:

(9) issues of the newsletter

(9) inserts of the Business Card Ad in the newsletter

**ASPE will once again be allowing you to rotate your advertisement throughout the year!** If you wish to change your ad during the 2021/2022 session, email the new ad to me, and it will be changed in the following newsletter.

**Payment is due by September 17<sup>th</sup>.** With your payment, please include your current business card as you want it to appear in the newsletter.

Please contact me with any questions you may have.

Phone: (616) 217-1399

Email: [jmburke@burkeagency.com](mailto:jmburke@burkeagency.com)

Please send checks to:

Western Michigan ASPE  
c/o Jonathan Burke  
8593 Byron Commerce Dr.  
Byron Center, MI 49315

Thank you for supporting your local ASPE chapter,

**Jonathan Burke**  
Corresponding Secretary  
Western Michigan ASPE  
(616) 217-1399

## **AYP Liaison — Luciana Kayo**

Quiz Answers:

1. C
2. A
3. C
4. A
5. B
6. C
7. B
8. D
9. B
10. D