



Newsletter

Western Michigan Chapter

November 2023

WESTERN MICHIGAN

This months meeting info:

Grand Rapids Meeting:

Kalamazoo Meeting:

Dates:

November 8th & 9th

Location:

**Canopy by Hilton - Grand Rapids Downtown
131 Ionia Avenue SW
Grand Rapids, MI 49503**

Location:

**Park Club of Kalamazoo
219 W. South Street
Kalamazoo , MI 49007**

Speaker:

**Brennan Doherty
MIFAB**

Time:

**11:30 Social
12:00 Presentation & Lunch**

Time:

**11:30 Social
12:00 Presentation & Lunch**

Subject:

Siphonic Storm Drainage Systems

Cost:

\$30 per person

Cost:

\$30 per person

Important Information:

Lunch Meeting in Grand Rapids!

The Grand Rapids meeting will once again be held at lunch. Please join us at the Canopy by Hilton in downtown Grand Rapids for this months meeting. The presentation will begin at noon sharp. See you there!





NO PITCH STORM DRAINAGE

EDUCATION SESSION

(1 ASPE CEU or 1 AIA or 1 PDH)

WHAT'S WRONG W/ TRADITIONAL GRAVITY STORM DRAINAGE?

- Large Diameter Pipework = Increased Material Cost
- Sloped Pipes = More Chase Room Needed
- Pitch Dictates Pipe Routing & Discharge = More Chases Throughout Building
- Increased Vertical Drops = Only Slope so far Before Entering Livable Space
- Unachievable Routing for Overflow = Cannot Slope to Needed Discharge Location
- Added Civil Connections = Need for Civils to Meet Where Pipe Slope Limits
- Increased Building Elevations = Accounts for Slope in Pipe
- Increased Ponding Rates & Standing Water = Increase for Clogs, Leaks, Roof Collapse

CLASS TOPICS COVERED

- ✓ Bracing Requirements
- ✓ Code Approval - IPC & UPC
- ✓ Tolerances for In-Field Changes
- ✓ Application Limitations
- ✓ How to Layout a Siphonic System for Design
- ✓ How to Reduce Maintenance Costs

SIPHONIC DRAINAGE TOP 5

- 1 Pipe Installs w/ No Pitch, No Slope
- 2 Pipework is 1/2 diameter of Traditional Gravity
- 3 Eliminate Verticals by Collecting More Drains Together
- 4 Eliminate Civil Connections
- 5 Eliminate Material + Labor + Coordination + Inspections w/ Less Connections

Wed, Nov 8th @ 12PM EST
Canopy Hilton - 131 Ionia Ave SW,
Grand Rapids, MI 49503

Thurs, Nov 9th @ 12PM EST
Park Club of Kalamazoo - 219 W. South Street,
Kalamazoo, MI, 49007



Speaker
Brennan Doherty



+312-241-5224 bdoherly@mifab.com



Watts Water Technologies, Inc.

Connected Roof System



With wireless monitoring, keep an eye on your flat roof with Watts smart and connected technology and get instant notifications if your roof drains are clogged

You can have serious problems if standing water penetrates your flat roof and enters your production area, warehouse, or data center. With Watts Connected Roof System, you can have peace of mind that your roof is monitored 24 hours a day and that you'll be alerted if your roof drains clog. Roof drains can be blocked by almost anything—accumulated leaves, dirt, or building materials. Experience shows that people rarely enter large flat rooftops because they have no access to them, or they have safety concerns. As a result, the water level on the roof can rise and cause severe damage before long.

Watts Connected Roof System consists of Gateway and Monitor units. Mount the monitor next to any roof drain to collect water level and temperature data.

The monitor sends wireless signals to the Gateway which functions as a controller. One Gateway can receive data from up to 16 monitors. Without proper drainage, rainwater collects in confined spaces on the rooftop.

When this happens, the Gateway issues a warning for screen display and communicates with your Building Management System (BMS) to generate SMS or email alerts.



- Safeguard your entire operation with a small investment
- Wireless monitoring with quick installation
- Easy and speedy access to information
- Reduce maintenance and labor costs
- 915 MHz wireless range of 1500 meters
- Water level and temperature measurements
- Relay output for alarming and process control
- Up to 10 years of battery lifetime
- Modbus connection to Building Management System

TAGGART-KNIGHT

Manufacturers' Representative

Bill Rohen

1.616.286.0000

bill.rohen@taggartknight.com

Chapter President—Brian Peceny

First, I'd like to thank Josh Pedraja with Patton Medical. I thought he did a wonderful job presenting a great overview of medical gas systems used in hospitals. We tend to focus on hospitals, but you'll be designing medical gas systems for long term care facilities, urgent care and even dental, along with other locations. The gospel for med gas is NFPA-99. If you are planning on doing any medical gas design, it's a must have. And if you want to design systems correctly, you should consider becoming ASSE 6005 certified. Check out opportunities online or reach out to your local medical gas systems representative who will be more than happy to help.

Second, thank you for the wonderful turnout in both Grand Rapids and Kalamazoo. For those who came in September but not October in GR, we have a much better room, much more comfortable.

Lastly, ASPE membership. Need a good reason? How about preparing for and taking the CPD (Certified in Plumbing Design). Why become CPD certified (I like rhetorical questions)? Its really the only certification I'm aware of that covers the basics of plumbing design for commercial construction. Have a BS in mechanical engineering? Have a PE? Have both? Did those properly cover how to vent a sanitary system? You don't need to be an ASPE member to take the CPD, but the cost to take the test is less for ASPE members.



EAST MICHIGAN
1715 Traditional Dr.
Commerce Township, MI 48390
P [248] 960-1147 F [248] 960-1149

WEST MICHIGAN
550 36th St. SE
Grand Rapids, MI 49548
P [616] 600-9660

<p><i>American Standard</i></p> <p>https://www.americanstandard-us.com/professionals/architect-designer (Kitchen & Bathroom)</p>	<p>AMTROL</p> <p>www.amtrol.com (Expansion Tanks)</p>	<p>BASCO</p> <p>www.bascoshowerdoor.com (Shower Doors)</p>	<p>Bradley</p> <p>www.bradleycorp.com (Washroom Solutions)</p>
<p>CALEFFI Hydronic Solutions</p> <p>www.caleffi.com/usa/en-us (Hydronic Accessories)</p>	<p>FIAT PRODUCTS</p> <p>www.fiatproducts.com (Shower Floors)</p>	<p>GROHE</p> <p>https://www.grohe.us/customize/architects-and-designers (Faucets)</p>	<p>IBC</p> <p>www.ibcboiler.com (Boilers)</p>
<p>Oasis</p> <p>www.oasisbath.com (Fiberglass & Acrylic Tub & Showers)</p>	<p>OASIS</p> <p>www.oasiscoolers.com (Oasis Water Coolers)</p>	<p>OATEY SCS Supply Chain Services</p> <p> </p> <p>www.oatey.com (Cherne, Dbn Brass, Harvey & Hercules)</p>	<p>Panasonic USA</p> <p>https://na.panasonic.com/us/home-living-solutions/ventilation-indoor-air-quality/ (Bath Fans)</p>
<p>REHAU Unlimited Polymer Solutions</p> <p>www.rehau.com/us-en (PEX Plumbing Products)</p>	<p>Rheem RUUD</p> <p>www.rheem.com www.ruud.com (Water Heaters)</p>		

DEWALT



FAIRMONT
designs.
Funding Innovation

General Wire Spring Company

IRWIN
TOOLS

LENEX
ALWAYS HUNGRY

MATCO
NORCA

PEXGUN
AUTOMATIC PEX PIPE TIE TOOL

StanleyBlack&Decker

STRASSER
WOODWORKS

TURBOTORCH

Represented by New Century Sales:

WEST MICHIGAN
Michael Zago
C (616) 293-2121
E mikez@newcenturysales.com

WEST MICHIGAN
Rod Cox
C (616) 706-1481
E rodco@newcenturysales.com

EAST MICHIGAN
Todd Hiler
C (513) 633-2609
E toddh@newcenturysales.com

EAST MICHIGAN
Ross Beck
C (734) 673-2119
E rossb@newcenturysales.com

www.newcenturysales.com



New Century Sales, Inc.
Manufacturer's Representatives

EAST MICHIGAN
1715 Traditional Dr.
Commerce Township, MI 48390
P (248) 960-1147 F (248) 960-1149

WEST MICHIGAN
550 36th St. SE
Grand Rapids, MI 49548
P (616) 600-9660

BETTER DESIGN. BETTER HEATER. BEST SOLUTION

OUR BEST HYBRID YET.

Packed with the most durable, advanced features, the Rheem® Hybrid Water Heater makes installs and service easier. Plus, with 50- and 80-gallon models available, it's the best solution to drive sales for your business.

- 360° Performance™**
Estimated savings of over \$4000 in energy costs!
- 360° Installability™**
Horizontal transport for easy roll-up
- 360° Durability™**
Dish-in-dish warranty!



Rheem.com/HybridSolutions
or contact your local distributor for details.

Based on comparison of a 40-gallon Rheem Hybrid Water Heater model with a 40-gallon standard electric water heater. Savings based on a 10% energy efficiency discount. Actual savings may vary. ©2014 Rheem Manufacturing Company. Rheem, the Rheem logo and Hybrid are trademarks of Rheem Manufacturing Company. EcoNet is a registered trademark of Rheem Manufacturing Company. All other trademarks are the property of their respective owners.



The new degree of comfort.™



**UP TO \$300
FEDERAL TAX CREDIT***

Filtration Without Frustration

Save Time and Money On Maintenance. Access OASIS filtration systems at the top of the bottle fillers with Tilt 'n Tether! Change filters in minutes with easy access to the filter up top. Oasis exclusive Tilt 'N Tether allows for faster, hands-free filter changes without crawling on the floor.

Learn more at oasiscoolers.com



Changing Filters Has Never Been Easier



GREAT LOOKING. GREAT OPTIONS. GREAT VALUE.

BRADLEY LAVATORY SYSTEMS offer a variety of touch free and worry-free options for handwashing in public spaces. Design your ideal solution with multiple materials, basin shapes and faucet choices. Trust Bradley for your next project, the leader in commercial handwashing. Visit bradleycorp.com for more information. **Commercial Washrooms. Brought to Life.**



EVERO
CAST-FORMED NATURAL QUARTZ

Terreon
CAST-FORMED SOLID SURFACE



bradleycorp.com/lavatory-systems

Engineering progress
Enhancing lives

Our crew stands behind you.

Meet demanding specs, tight deadlines and budget targets with support from the REHAU team.
na.rehau.com/everlocplus



Represented by New Century Sales:

WEST MICHIGAN
Michael Zago
C (616) 293-2121

[E mikez@newcenturysales.com](mailto:Emikez@newcenturysales.com)

WEST MICHIGAN
Rod Cox
C (616) 706-1481

[E rodc@newcenturysales.com](mailto:ERodc@newcenturysales.com)

EAST MICHIGAN
Todd Hiler
C (513) 633-2609

[E toddh@newcenturysales.com](mailto:Etoddh@newcenturysales.com)

EAST MICHIGAN
Ross Beck
C (734) 673-2119

[E rossb@newcenturysales.com](mailto:ERossb@newcenturysales.com)

www.newcenturysales.com

VP Technical—Nick Von Myhr

Firstly, I would like to thank Josh Pedraja with Patton's Medical for the excellent medical gas presentations given in October. All the feedback received from his presentations has only been positive! I would encourage all who work in the medical engineering field to save Josh's contact information and utilize him as a future resource.

This month the ASPE group welcomes Brennan Doherty with MIFAB to talk to us about siphonic storm drainage systems. Brennan will be reviewing what the design process looks like when incorporating a siphonic system into your buildings design. Brennan will also be sharing the many benefits of siphonic systems and how they can save your clients money.

Because of my own limited knowledge regarding this topic, I personally have not done a siphonic system in West Michigan. I am hoping that after attending this meeting, I will have a better understanding of how the system works and can potentially provide a future client with a great product. I hope to see you there!



VE Sales merges with Sales Service Plus

Dustin Gardner
 dgardner@salesserviceplus.com
 616.558.3128



Highland Tank®

- Aboveground & Underground Oil/Water Separators
- Oil Sand Interceptors
- Elevator Sump Pump Interceptors
- Manual Oil Interceptors
- Advanced Filtration Systems

Sales Service Plus has merged with VE Sales. We look forward to working with you!



Elevator Sump Pump Interceptors



Manual Oil Interceptors



Oil/Water Separators



Elevator Oil Interceptors

www.highlandtank.com | 814-893-5701

Pipe Hangers & Devices

Cladding No. 499



"The Complete Line of Pipe Supports and Devices"

PHD Manufacturing, Inc.
 10000 W. 10th Street, Suite 100
 Denver, CO 80231 USA
 Phone: 303.751.1341 Fax: 303.751.1342
 www.phdusa.com

Strut Products & Accessories

Cladding No. 70



"The Complete Line of Strut Products & Accessories"

PHD Manufacturing, Inc.
 10000 W. 10th Street, Suite 100
 Denver, CO 80231 USA
 Phone: 303.751.1341 Fax: 303.751.1342
 www.phdusa.com

Snappitz - Self locking Insulated Pipe Supports



NEW

SNAPP ITZ

15 Seconds to Install


LEEDS Friendly – with higher insulative equalities and 17% recycled materials used in Polyisocyanurate Foam




Snappitz Thermal Insulated Pipe Shields are currently being installed throughout this Ford Blue Oval project.



We make rooftop supports easy.



Since 1982 | Easy to Work With
 20 year warranty | Made in USA
 Learn more at miroind.com



MIRO
 INDUSTRIES, INC.
 ROOFTOP SUPPORT PRODUCTS

QLS SERIES

PREFABRICATED LIFT STATIONS WITH Z-RAIL™ TECHNOLOGY

Choose your package system

- Single or multiple pump configurations
- Effluent, sewage, grinder, or progressive cavity pumps

Zoeller's Z-Rail® System and guide rails provides quick and easy pump removal

All Zoeller products are 100% FACTORY TESTED.




ZOELLER
 PUMP COMPANY



FAMILY OWNED
 AMERICAN PROUD

VP Membership—John Cassady

Welcome back to a new ASPE season! We are currently at 91 members in the West Michigan chapter.

All new members moving forward will receive a voucher for a free meeting, redeemable at checkout when registering for an event.

For those of you who have a membership expiring by the end of November, you should have received an email reminder from the national society already. I will send out follow-up reminders to you all as well.

When you are renewing your membership, please be sure to select West Michigan as your “home chapter”. Any “at large” members may miss out on communication from the chapter.

You can also update your chapter affiliation by logging in to ASPE.org and following My Account > My Profile and editing your information.

If you have a coworker interested in joining our chapter, please have them reach out to me with questions about membership.



Proper Filtration Sizing and Application

One of the most *mis*-applied & *mis*-sized pieces of equipment is Filtration!

Cartridge Filters are used in a wide variety of applications, from whole house water filters (1-30 Micron range generally) to pre-filters on your Reverse Osmosis System (1 or 5 Micron Recommended). The main objective of a cartridge filter is to remove debris, like smaller particles and sediment or even sand (which is common) from your water supply. Some filters are used for Chlorine removal, Arsenic and other contaminants. If you are unsure of which cartridge you need, one of our treatment specialists will help you specify and design the correct filter. These filters can be Depth (Pre-Filtration) or Absolute (Post-Filtration) used on Purified Water Systems generally downstream of RO/DI/UV (ultraviolet lamp) systems to trap bacteria carcasses and microbes killed by the UV lamp.

Bag Filters are generally used for higher flow applications. They are more of an economic option than cartridge filters, but still filter the particulate and sediment in the lines that can cause clogging and flow rate issues in the building or on equipment. These particulates and sediment have micron ratings from 1-1500. A bonus is that Bag Filters can be rinsed and reused. Bag Filters have their place, but usually only mask a sediment problem, not alleviate it.

Housings are generally made up of Polypropylene or Stainless Steel, in a variety of configurations, pipe sizes, and connections.

Both sized off incoming line size and peak GPM (Gallons per minute).



Contact Flier's for proper sizing & application!

Corporate Office: Byron Center, MI: (616) 345-3407

Branch Office: Kalamazoo, MI: (800) 650-7034

qualitywaterexperts.com

VP Education—Tom Kingshott

I'm going to work to feature an on-demand education opportunity each month as well as a running list of available education on-demand opportunities. If you have an educational program that offers CEU's, please let me know and I'll add to the list!

This month is from Bradley Corporation:

<https://www.bradleycorp.com/ce>

Other CEU's available:

- ASPE: <https://education.aspe.org/RLE> and <https://education.aspe.org/on-demand-webinars>.
- Watts: <https://www.watts.com/resources/training>
- R.L. Deppmann: <https://www.deppmann.com/education/>

Please feel free to contact me with any questions: kingshottt@progressiveae.com.

MEET THE GREAT BASIN™ FAMILY



Schier offers nine Great Basin™ models from 10 to 1,500 gallons.

Contact our team at 913.951.3300
or visit support@schierproducts.com



▲ GB-1000 Installation - Costco

REPRESENTED BY

Exceptional Product Sales

Office: (586) 286-3240

GM GREASE MONKEY™

Size your project with Grease Monkey.
GreaseMonkeySizing.com

LIFETIME GUARANTEED **GREASE INTERCEPTORS**

Made in the USA 

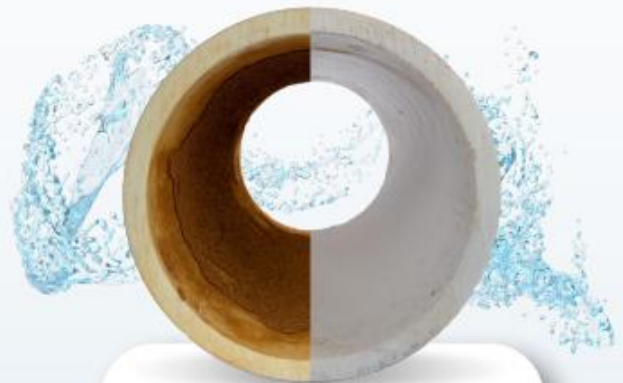
A DIRTY SYSTEM IS COSTLY

Save up to **35%**
on energy and
maintenance costs.

Ask us how.

Nanobubble Generators from Rapid Water Technologies remove and prevent the buildup of biofilm and other deposits in commercial and industrial water use.

- ✓ Heat Transfer Efficiency
- ✓ Chemical Use
- ✓ Equipment Maintenance
- ✓ System Cleaning & Repair
- ✓ Increased Production
- ✓ Water Use
- ✓ Sanitation
(Legionella, Salmonella, COVID-19, etc.)



**Start saving
today!**



 **MERLO**
ENERGY

A MEMBER OF THE KENDALL GROUP

800-362-4994

sales@merloenergy.com

VP Legislative —Luciana Kayo

Have you noticed that in the recent past, approximately two or three years, owners or clients have been requesting more frequently to downsize the domestic water service to save money?

You may have performed all the necessary calculations and fixture unit count as required by the plumbing code, and designed the domestic water system according to the pressure available and maximum recommended water velocities, but still find yourself being pushed to reduce the water service to the building?

In this article, we will explore the critical considerations that are essential for ensuring the proper operation of a domestic water system. Such a system is crucial for safety, consistent water pressure, efficient use, and preventing plumbing issues. Additionally, it should be adaptable to future changes, energy-efficient, and focused on maintaining water quality while complying with local regulations. Durability and cost savings are important, as is the positive environmental impact.

As we explore these aspects of water design, we will highlight their importance and how they benefit occupants, the environment, and a building's long-term success. We will stress the need to prioritize these factors over cost-cutting measures that could compromise system performance and sustainability.

1. Prioritizing Health and Safety

The main objective of a well-designed domestic water system is to guarantee a safe and clean supply of potable water. Waterborne diseases and contaminants pose substantial health risks, and a properly engineered system acts as a protective shield, ensuring that the water remains free from contamination. This protects all aspects of daily life, including drinking, cooking, and personal hygiene.

2. Consistent Water Pressure

Consistency in water pressure in a building is very important. Inadequate or pressure fluctuations directly affect the operation of plumbing fixtures and appliances. Inconsistent water pressure can lead to inconveniences and diminished quality of life.

3. Promoting Efficient Water Usage

Effective water usage is not only a matter of conserving resources but also a means of reducing utility bills and lessening our environmental impact. Properly designed systems incorporate features such as efficient distribution, low-flow fixtures, and other considerations that minimize waste of water.



MERLO[®]
ENERGY

A MEMBER OF THE KENDALL GROUP

DIGITAL-FLO™ SEMI-INSTANTANEOUS STEAM / WATER HEATER

Pre-Piped Digital Hot Water Generation & Control Solutions



- Featuring The Brain - ASSE 1017 certified digital recirculation valve.
- Choose from 16 standard assemblies or customize.
- Compact vertical design - small footprint.
- Simple tube bundle access.
- Optional SAGE™ Building System Interface with integral data logging to support AHSRAE 188 monitoring and reporting compliance.
- Water temperature raised above Legionella survival levels on every recirculation cycle.

Since 1917, Merlo Energy has been a manufacturer's representative and stocking distributor of steam, condensate, hot water, and air specialty products. More than just products, we pride ourselves in being a full solution provider for our customers. Focused on energy conservation, Merlo Energy provides services to help you reduce your energy costs.



Contact Us Today!
800-362-4994



VP Legislative —Luciana Kayo (continued)

4. Preventing Plumbing Failures

A well-designed system helps mitigate the risk of plumbing failures, including leaks and burst pipes. This not only avoids costly water damage but also prevents structural issues and the inconvenience of repairs and cleanup.

5. Being Ready for Changes

A domestic water system should be adaptable to accommodate potential changes or expansions within the building. For example, a well thought system would make a bathroom addition easy without having to make structural modifications in the future.

6. Saving Energy

The design of a domestic water system can impact the overall energy efficiency of a building. By reducing heat loss from hot water pipes and minimizing the energy required for water heating, a well-engineered system contributes to a more environmentally friendly and cost-effective building.

7. Maintaining Water Quality

Proper system design includes provisions for water treatment and filtration where necessary. This is especially crucial in areas with hard water or other water quality concerns. It ensures that the water quality remains consistently high over time.

8. Complying with Regulations

Adherence to local building codes and regulations is a non-negotiable aspect is designing a domestic water system. This is indispensable for ensuring safety, maintaining water quality, and remaining legally compliant.

9. Prioritizing Durability

A good system is built to last, so parts do not have to be replaced often. A well-engineered system takes into account the durability of materials and components, reducing the need for frequent replacements and maintenance. This not only saves money but also minimizes environmental impact.

10. Achieving Cost Saving

While an efficient design may necessitate an initial investment, it results in long-term cost savings. These savings manifest in reduced water and energy bills, as well as decreased maintenance and repair costs.

FIGHTING CORROSION & BACTERIA LIKE NO OTHER



Only Bradford White features exclusive Vitraglas® tank lining with Microban®:

- Vitraglas® provides unsurpassed protection from the corrosive effects of water.
- Microban® antimicrobial product protection helps prevent the growth of bacteria, mold and mildew on the surface of the tank lining.

**Vitraglas® and Microban® offer
product protection and peace of mind
around-the-clock.**



West Michigan is the proud home of Bradford White Water Heaters.

Microban® antimicrobial product protection helps prevent the growth of bacteria, mold and mildew that may affect the product. The built-in antimicrobial properties do not protect users or others from disease-causing organisms. Microban® is a registered trademark of Microban Products Company. ©2023, Bradford White Corporation. All rights reserved. BAHBA0123

VP Legislative —Luciana Kayo (continued)

11. Helping the Environment

Efficient water systems contribute to reducing the overall demand for water resources and minimizing the energy required for water heating. These actions have positive environmental implications, conserving resources and reducing greenhouse gas emissions.

12. Ensuring Resilience

A properly designed system enhances resilience against external factors such as extreme weather events or water supply issues. Elements like redundancy, backup systems, and the use of appropriate materials work in conjunction to guarantee a continuous water supply, even in adverse conditions.

In conclusion, having a smart water system in a building is really important. It affects the health of the occupants, comfort, and the environment. Therefore, when somebody questions your design, list and bring for discussion the potential issues the building may experience in the future if the primary concern is cutting costs upfront and forgetting about proper system design and user comfort. This may help save a lot of money and avoid potential plumbing issues in the future.



Diversified
SPEC. SALES, INC.



Western Michigan

931 West River Center Dr. NE,
Comstock Park, MI 49321
p: 616.785.9000
f: 616.785.7347

Eastern Michigan

13261 Northend Ave,
Oak Park, MI 48237
p: 248.398.2400
f: 248.547.4905

Northeastern Ohio

2057 East Aurora Rd, Suite D
Twinsburg, OH 44087
p: 216.571.5721

2023-2024 ASPE Western Michigan Meetings

September 13th & 14th
Tyler Ismert
Schier Products
Grease Interceptor Sizing

December 14th (Christmas Party)
Cody Mack
Caleffi North America
Mixing And Balancing In Domestic
Hot Water Systems

March 13th & 14th
Stadium Design
Julius Ballanco

October 11th & 12th
Josh Pedraja
Patton's Medical
Medical Gas 101

January 10th & 11th
Thad Kuzma and Joe Hancock
Flow-Tech Systems
Legionella Filtration

April 3rd & 4th
Marco DeAngelo
Arkema Inc.
Codes And Standards In The
Plenum With Corrosive Waste
Drainage

November 8th & 9th
Dawn Cole
Quality Water & Air Inc.
Siphonic Storm Drainage Systems

February 7th & 8th
Bob Taylor
McWane Plumbing Group
The History Of Cast Iron

TBD
ASPE Annual Golf Outing

2022-2023 ASPE Western Michigan Chapter Board

PRESIDENT

Brian Peceny
Progressive AE
(616) 365-6541
pecenyb@progressiveae.com

VP—MEMBERSHIP

John Cassady
AirTech Equipment
(616) 648 7703
Jcassady30@gmail.com

EVENT COORDINATOR

Breanna Kooiman
Progressive AE
(616) 988-4854
kooimanb@progressiveae.com

TREASURER

Chuck Shoudel, CPD, GGP
Byce & Associates
(269) 488-7195
chuck.shoudel@byce.com

ADMINISTRATIVE SECRETARY

Travis Smith, CPD
Progressive AE
(616) 988-4862
smitht2@progressiveae.com

BOARD ADDRESS:

ASPE Western Michigan
P.O. Box 150047
Grand Rapids, MI 49515
aspewestmichigan@gmail.com

VP—TECHNICAL

Nick Von Myhr
GMB
(616) 322-4713
nickv@gmb.com

CORRESPONDING SECRETARY

Jonathan Burke
Burke Agency
(616) 217-1399
jmburke@burkeagency.com

VP—EDUCATION

Tom Kingshott, CPD, GPD
Progressive AE
(616) 361-2664
kingshottt@progressiveae.com

VP—LEGISLATIVE

Luciana Kayo, CPD
Comprehensive Engineering
(616) 737-9227
lucianak@compeng.com

ASPE Newsletter Editor — Jonathan Burke — jmburke@burkeagency.com



Lloyd Cooper
 Manufacturers Representative
 Plumbing and Heating Products
 LloydC@jwsalesinc.net
 orders@jwsalesinc.net

1774 W Tuttle Rd
 Ionia, MI 48846
 (248) 745-8590
 CELL (616) 273-0992
 www.jwsalesinc.net



Armstrong

Tim Jones
 Technical Manager
 Great Lakes Region

816 Maple Street
 Three Rivers, MI 49093 - U.S.A.
 Direct Phone: (269) 279-3104
 Mobile Phone: (269) 532-4441
 tjones@armstronginternational.com
 armstronginternational.com

Intelligent System Solutions STEAM • AIR • HOT WATER



GMB
 www.gmb.com



New Century Sales, Inc.
 Manufacturer's Representatives
 550 36th St. SE
 Grand Rapids, MI 49548

Michael Zago
 Principal
 D (616) 600-9660 x 107
 C (616) 293-2121
 E mikez@newcenturysales.com


Rod Cox
 Principal
 D (616) 600-9660 x 116
 C (616) 706-1481
 E rodc@newcenturysales.com




Commercial - Industrial
 Plumbing - Heating
 Sheetmetal
 Design - Build
 Process Piping

NORTHWEST KENT MECHANICAL CO.
 P.O. Box 216K · 4095 16 Mile Rd.
 Cedar Springs, Michigan 49319
 www.nwkentmech.com

(616) 696-9026
 FAX (616) 696-9327



DAVE WATSON ASSOCIATES, INC.
 Manufactures' Representatives



LE ultra pure water system, LabWaste high temp corrosive waste DWV system, CPVC / PVC pipe, valves and fittings. Ames / Febco backflow, pressure - temperature regulation. Mueller strainers and valves.

OFFICE (800) 589-5595
 CHARLIE WATSON

CELL (616) 828-8309
 EMAIL CWATSON@DAVEWATSON.BIZ

SALES SERVICE PLUS, INC.
 Manufacturers Representatives



Dustin Gardner
 Territory Manager

"SERVICE IS OUR MIDDLE NAME"

45606 Mast Street, Plymouth, MI 48170
 DGardner@SalesServicePlus.com
 www.SalesServicePlus.com

(734) 454-7620 EXT 128
 (734) 454-7632
 (616) 273-1999

Jim Escamilla, PE
 President/CEO

306 South Kalamazoo Mall
 Kalamazoo, Michigan 49007
 t: 269.381.6170
 f: 269.381.6176
 c: 269.569.3550
 jim.escamilla@byce.com

BYCE
 ASSOCIATES, P.C.
 ENGINEERS + ARCHITECTS

INNOVATIVE PRACTICAL SOLUTIONS
 CIVIL ARCHITECTURAL INTERIOR DESIGN STRUCTURAL MECHANICAL
 ELECTRICAL BUILDING COMMISSIONING PROJECT MANAGEMENT

Jonathan M. Burke



BURKE AGENCY
MANUFACTURERS' REPRESENTATIVE

Cell: (616) 217-1399

IMMEDIATE IMPACT. LASTING RELATIONSHIPS. EXTRAORDINARY RESULTS.



5402 RUSCHE DR NW
COMSTOCK PARK, MI 49321

ZMALEWITZ@EMGSM.COM
616.279.6471 M
616.785.4188 O

ZAC MALEWITZ
SALES

EMGSM.COM

DALE SHEEHY
Western MI Territory Manager



13050 Northend Ave. Oak Park
231-578-2011
dsheehy@balfrey-johnston.com

Serving the Construction Industry since 1959



Brian Underhill
Applications Engineer

Cell 616-292-7194
bunderhill@fliersinc.com

.....

PURE engineering. PURE service. PURIFICATION.

7425 Clyde Park SW | Byron Center, MI 49315
Ph 616-583-9040 Ext 126 | 800-898-5525 | Fx 616-583-1230



Mechanical
Electrical
Structural
Civil

Comprehensive Engineering
4650 Plainfield Ave NE, Suite A
Grand Rapids, MI 49525

Tel: (616) 365.9933
www.compeng.com

Bill Rohen 616.286.0000 - m



Manufacturers' Representative
Jenison, Michigan 49428
616.286.0000 - office
www.taggartknight.com

bill.rohen@taggartknight.com



Diversified
SPEC. SALES, INC.

Shawn Olger
cell: 616.799.0450
office: 616.785.9000
solger@dsshowley.com

931 West River Center Dr, Comstock Park, MI 49321
p: 616.785.9000 f: 616-785-7347
www.diversifiedspec.com



Diversified
SPEC. SALES, INC.

Matt Sleper
cell: 269.267.2401
office: 616.785.9000
msleper@dsshowley.com

931 West River Center Dr, Comstock Park, MI 49321
p: 616.785.9000 f: 616-785-7347
www.diversifiedspec.com



Western Michigan Chapter

Help promote your business and support your local ASPE chapter by advertising in the 2023/2024 Western Michigan ASPE Society Newsletter which reaches local plumbing and mechanical engineers as well as local wholesale members. Choose the advertising level that best suits your needs. This increase in publicity for your company will be an asset for all parties involved.

Business card: \$150

Manufacturer Ads:

1/8 Page \$260

1/4 Page \$475

Full Page \$880

Included with your fee:

(9) issues of the newsletter

(9) inserts of the Business Card Ad in the newsletter

ASPE will once again be allowing you to rotate your advertisement throughout the year! If you wish to change your ad during the 2023/2024 session, email the new ad to me, and it will be changed in the following newsletter.

Advertising space can be purchased on the West Michigan ASPE website:

[Click here to purchase advertising space in the 2023/2024 newsletter](#)

Please send a copy of your ads and/or business cards to Jonathan Burke:

Phone: (616) 217-1399 Email: jmburke@burkeagency.com

Thank you for supporting your local ASPE chapter.