



Newsletter

Western Michigan Chapter

April 2024

WESTERN MICHIGAN

This months meeting info:

Grand Rapids Meeting:

Kalamazoo Meeting:

Dates:

April 10th & 11th

Location:

**Canopy by Hilton - Grand Rapids Downtown
131 Ionia Avenue SW
Grand Rapids, MI 49503**

Location:

**Park Club of Kalamazoo
219 W. South Street
Kalamazoo , MI 49007**

Speaker:

**Marco DeAngelo
Kynar PVDF Systems**

Time:

**11:30 Social
12:00 Presentation & Lunch**

Time:

**11:30 Social
12:00 Presentation & Lunch**

Subject:

Codes And Standards In The Plenum With Corrosive Waste Drainage

Cost:

\$30 per person

Cost:

\$30 per person

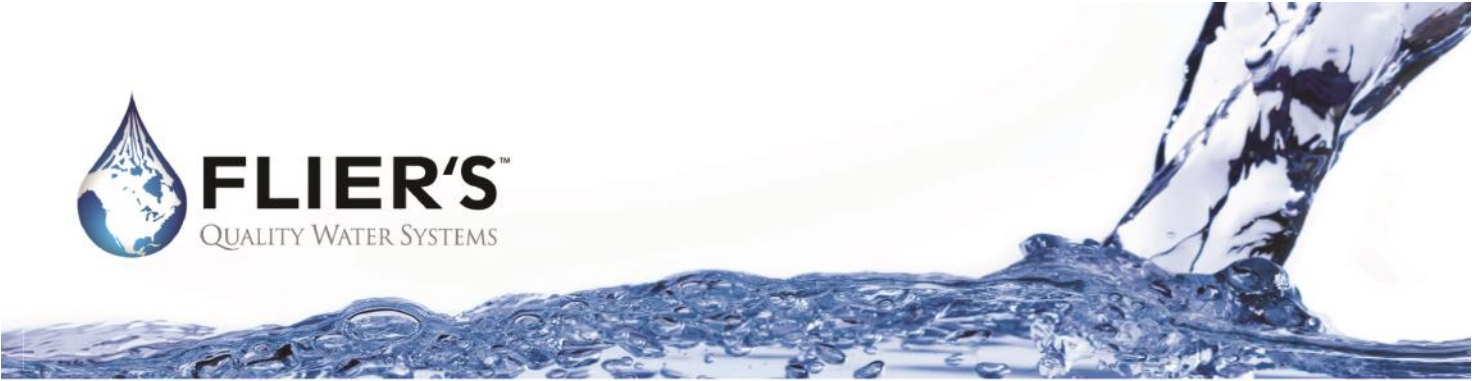
Important Information:

Registration is Open!!!

Get your foursomes together. Registration is now open for this year's West Michigan ASPE Golf Outing. Use the link below to sign up:

[Register Here](#)





Contaminants in Potable Water — Boil Water Advisories

What contaminants could possibly be in your water? If your local health officials issue a boil water advisory, you should use bottled water or boil your tap water. These advisories mean that your community's water has, or could have, germs that can make you sick.

Advisories may include recommendations about preparing food, drinks, & ice, and dishwashing & hygiene (such as brushing teeth and bathing). Water systems are concerned about bacteria such as *Shigella*, viruses such as *Norovirus*, and parasites such as *Cryptosporidium*. Human illness from these microbes is usually caused by eating raw or undercooked food, ingesting contaminated recreational or other untreated water, or poor hand-washing.



If you have a Water Softener add ½ cup of unscented bleach to the brine well (for a 1 cu.ft. unit: **consult Flier's on larger systems**) and manually regenerate.

If you have a Reverse Osmosis (RO) System you should change the filters and membrane.

These advisories are usually a result of a broken water main which can leave the water discolored with iron and contain dirt and silt. It's best to flush the cold water first from a faucet or spout with no aerator as this prevents clogging. Once the water is clear on the cold side, flush the hot side, and then test for a residual carry over of chlorine — you may be able to smell it.

Homes or offices with a RO system will have the highest level of assurance guarding against bacteria and other contaminants that may have been stirred up and sucked into the water.

Flier's will work with EGLE or other state agencies to determine acceptable treatment methods.

Contact Flier's today!

Corporate Office: Byron Center, MI: (616) 345-3407

Branch Office: Kalamazoo, MI: (800) 650-7034

qualitywaterexperts.com

Plenum Plus for Chemical Waste and High Purity Applications

- Conveys chemicals that PP cannot
- Conveys very hot or very cold waste streams
- Conveys streams with abrasive particulates or slurries
- Tolerates vibration or other mechanical stressors
- Can be exposed to radiation, including UV



ORION®

A WATTS Brand

CHEMICAL DRAINAGE

The KYNAR® brand ORION Plenum Plus PVDF provides superior resistance to more chemicals and combinations of chemicals, in higher concentrations, and over a broader temperature range than polypropylene.

The KYNAR® brand ORION Plenum Plus PVDF formulation has been certified to meet ASTM E-84 and UL 723 standards for flame spread and smoke generation. The certification means that Plenum Plus PVDF piping systems can be used safely in areas such as return air plenums.

HIGH PURITY

Orion's Ultra high purity system is for those critical high purity liquid transportation situations when you absolutely, positively cannot tolerate extractables. It is manufactured from 100% pure, virgin, KYNAR® PVDF (Polyvinylidene Fluoride) resin. PVDF meets the most stringent requirements for extractables and purity levels for 18 megohm deionized water.

Features

- Non-leaching—PVDF adds no detectable leachants or other contaminants to solutions.
- Smooth walls—The extra smooth walls PVDF produces help assure turbulent-free flow of liquids and prevent the collection and breeding of fungi, bacteria and other biological impurities.



Chemical
Resistance



Compliance

For more information, contact our sales representative Bill Rohen at
616.286.0000 or Bill.Rohen@taggartknight.com



TAGGART-KNIGHT

Commercial Plumbing Manufacturers' Representative

www.taggartknight.com

Chapter President—Brian Peceny

First, a big thank you to Nick for lining up our great March Speaker Julius Ballanco. I don't consider myself a plumbing geek, but this was a speaker to get geeked about. Julius a true professional in the Plumbing Engineering field. His passion for plumbing was obvious, as those who attended could attest.

This month will be another new topic, at least for me, specialty corrosive piping systems appropriate for return air plenums.

Later in April, your very own ASPEWM will be providing a plumbing engineering 101 course. Storm water, potable water, and venting. Look for more information on this AYP opportunity in this newsletter. By the time you read this, it will likely be too late. There is an April 1 deadline to register for the ASPE CPD exam. It's a great plumbing accreditation and a good excuse to learn or relearn about plumbing. <https://aspe.org/education-credentialing/cpd/exam/>

Hope to see you at our next meeting, then again May 20th at our golf outing.

Update your specifications! The NEW EZH20 is here!

Single Old #	New	Bilevel Old #	NEW
LZS8WSLP	LZS8WSSP	LZSTL8WSLP	LZSTL8WSSP

FEATURES:



FASTER FILTER CHANGES



VISUAL FILTER MONITOR



AUTOMATIC FILTER RECOGNITION

Available on LZS8WSSP and LZSTL8WSSP



ENHANCED EZH20® BOTTLE FILLING STATION

with Quick Filter Change Wrapper

The bottle filling design features a drop-down cooler wrapper for quick, convenient filter changes. Standard on both single and bi-level units, the stainless steel wrapper provides quick access to the filter, water shut-off valve and power supply without removing the entire wrapper.

ELKAY

STANDARD Features:

- **Quick Filter Change Wrapper** allows for drop down access to filter, chiller and waste water and electrical connections in less than 30 seconds. All panels are stainless steel and tamper resistant.
- **6,000 Gallon** capacity NSF / ANSI 42 & 53 lead filter (51600C)
- **Same waste, water, electrical connection location and dimensions as previous models**
Available with **OPTIONAL** 2,250 Gallon capacity **PFOS & PFOA** reduction filter **SUFFIX (-PF)**

Upgrade legacy installed EZH20 units with side filter access lower wrappers and upgraded filtration:

EZFMK Filter Maintenance Kit Single	EZFMTLK	Filter Maintenance Kit (Bilevel)
51600C 6,000 Gallon Replacement Filter	71300C	2,250 Gallon PFOS / PFOA Filter

Schedule a lunch and learn with us to discuss the innovative new products from ElKay.








filterfirst@balfrey-johnston.com phone:313-864-2800



New Century Sales, Inc.
Manufacturer's Representatives

EAST MICHIGAN
1715 Traditional Dr.
Commerce Township, MI 48390
P [248] 960-1147 F [248] 960-1149

WEST MICHIGAN
550 36th St. SE
Grand Rapids, MI 49548
P [616] 600-9660

 https://www.americanstandard-us.com/professionals/architect-designer (Kitchen & Bathroom)	 www.amtrol.com (Expansion Tanks)	 www.bascoshowerdoor.com (Shower Doors)	 www.bradleycorp.com (Washroom Solutions)
 www.caleffi.com/usa/en-us (Hydronic Accessories)	 www.fiatproducts.com (Shower Floors)	 https://www.grohe.us/customize/architects-and-designers (Faucets)	 www.ibcboiler.com (Boilers)
 www.oasisbath.com (Fiberglass & Acrylic Tub & Showers)	 www.oasiscoolers.com (Oasis Water Coolers)	 Supply Chain Services  www.oatey.com (Cherne, Dbn Brass, Harvey & Hercules)	 https://na.panasonic.com/us/home-living-solutions/ventilation-indoor-air-quality/ (Bath Fans)


www.raypak.com
 (Residential and Commercial Hydronic Products)


 Unlimited Polymer Solutions
www.rehau.com/us-en
 (PEX Plumbing Products)


www.rheem.com
www.ruud.com
 (Water Heaters)












Represented by New Century Sales:

WEST MICHIGAN
Michael Zago
C (616) 293-2121
E mikez@newcenturysales.com

EAST MICHIGAN
Todd Hiler
C (513) 633-2609
E toddh@newcenturysales.com

EAST MICHIGAN
Ross Beck
C (734) 673-2119
E rossb@newcenturysales.com

www.newcenturysales.com

VP Technical—Nick Von Myhr

Hello Everyone,

First, I would like to thank Julius Ballanco for the excellent presentation given for stadiums and large arenas! It was very well presented, with tons of great information and packed full of very important design considerations. Thank you, Julius, we all appreciate your contributions to the industry.

This month I am pleased to introduce Marco DeAngelo with Kynar PVDF Systems. Marco will be educating us on the benefits and pitfalls between the different materials for designing corrosive waste systems in plenum spaces. He will also be reviewing the code requirements, and special design factors to consider when selecting drainage materials.

I look forward to seeing you all there.



Julius Ballanco

FIGHTING CORROSION & BACTERIA LIKE NO OTHER



Only Bradford White features exclusive Vitraglas® tank lining with Microban®:

- Vitraglas® provides unsurpassed protection from the corrosive effects of water.
- Microban® antimicrobial product protection helps prevent the growth of bacteria, mold and mildew on the surface of the tank lining.

**Vitraglas® and Microban® offer
product protection and peace of mind
around-the-clock.**



West Michigan is the proud home of Bradford White Water Heaters.

Microban® antimicrobial product protection helps prevent the growth of bacteria, mold and mildew that may affect the product. The built-in antimicrobial properties do not protect users or others from disease-causing organisms. Microban® is a registered trademark of Microban Products Company. ©2023, Bradford White Corporation. All rights reserved. BAHBA0123

VE Sales merges with Sales Service Plus

Dustin Gardner
 dgardner@salesserviceplus.com
 616.558.3128



Highland Tank®

- Aboveground & Underground Oil/Water Separators
- Oil Sand Interceptors
- Elevator Sump Pump Interceptors
- Manual Oil Interceptors
- Advanced Filtration Systems

Sales Service Plus has merged with VE Sales. We look forward to working with you!



Elevator Sump Pump Interceptors



Manual Oil Interceptors



Oil/Water Separators



Elevator Oil Interceptors

www.highlandtank.com | 814-893-5701

Pipe Hangers & Devices

Cladding No. 499



"The Complete Line of Pipe Supports and Devices"

PHD Manufacturing, Inc.
 10000 W. 10th Street
 Overland Park, KS 66211
 Phone: (913) 241-2200
 Fax: (913) 241-2201
 www.phd.com

Strut Products & Accessories

Cladding No. 70



"The Complete Line of Strut Products & Accessories"

PHD Manufacturing, Inc.
 10000 W. 10th Street
 Overland Park, KS 66211
 Phone: (913) 241-2200
 Fax: (913) 241-2201
 www.phd.com

Snappitz - Self locking Insulated Pipe Supports



NEW

SNAPP ITZ

15 Seconds to Install


LEEDS Friendly – with higher insulative equalities and 17% recycled materials used in Polyisocyanurate Foam




Snappitz Thermal Insulated Pipe Shields are currently being installed throughout this Ford Blue Oval project.



We make rooftop supports easy.



Since 1982 | Easy to Work With
 20 year warranty | Made in USA
 Learn more at miroind.com



MIRO
 INDUSTRIES, INC.
 ROOFTOP SUPPORT PRODUCTS

QLS SERIES

PREFABRICATED LIFT STATIONS WITH Z-RAIL™ TECHNOLOGY

Choose your package system

- Single or multiple pump configurations
- Effluent, sewage, grinder, or progressive cavity pumps

Zoeller's Z-Rail® System and guide rails provides quick and easy pump removal

All Zoeller products are 100% FACTORY TESTED.




ZOELLER
 PUMP COMPANY



FAMILY OWNED
 AMERICAN PROUD

Article from this month's speaker – Marco DeAngelo

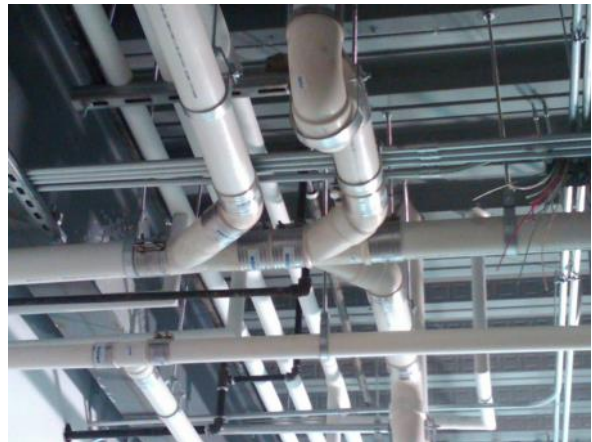
Waste Drainage Problems Draining You? Consider Upgrading to Kynar® PVDF Systems

Kynar® PVDF piping can offer upgraded performance over commodity plastics

Plastic drainage systems for laboratory and chemical waste containment are commonly installed to safely convey a variety of fluids. From diluted chemicals to aggressive by-products and heat caused from mixing chemicals, it is important that containment systems can withstand any challenge. For highly aggressive fluids, or high temperature challenges, Kynar® fluoropolymer piping offers nearly universal chemical resistance for low-pressure service and is rated at 150C per UL® RTI testing.

Kynar® PVDF, like other polymers, is lightweight and easy to join using mechanical fittings or electrofusion. Complete waste drain systems are available up to 10" diameter (larger diameters can be fabricated) and are UL® listed and labeled meeting the stringent requirements of ASTM E84 (25/50) **without modifications to the test standard**, ULC S102.2, and NFPA 90A Standard for the Installation of Air-Conditioning and Ventilating Systems, for use in plenums and concealed spaces.

The availability of chemical waste drain systems is complimented in industrial applications by the availability of Kynar® PVDF lined steel, FRP dual laminate Kynar® PVDF lined pipe, Kynar® PVDF Schedule 80 & SDR solid pressure pipe systems, and Kynar® PVDF biotech flexible tubing systems mechanically connected to injection molded Kynar® PVDF fittings. Based on lifetime performance, these systems, when used to handle hot strong acids, bleach, bromine, and changing chemical mixtures, are cost effective vs. exotic metals, fluoropolymers, and other engineering polymers.





PLUMBING GROUP



Superior Performance & System Reliability

DuRa Pipe™ enhanced epoxy coating applied to cast iron soil pipe and fittings. It is well suited for aggressive DWV applications where greater performance is required.



ABIFoundry.com



Anaco-Husky.com



PIPE & COUPLING

TylerPipe.com

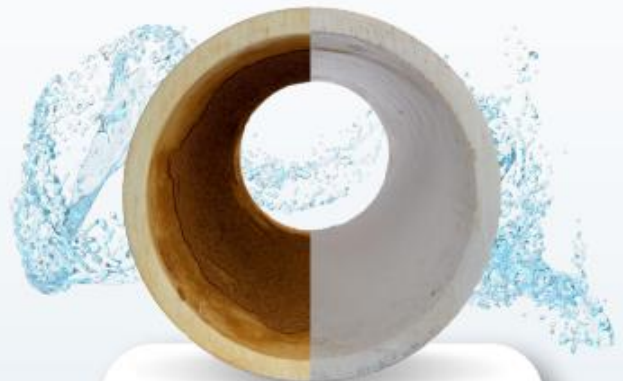
A DIRTY SYSTEM IS COSTLY

Save up to **35%**
on energy and
maintenance costs.

Ask us how.

Nanobubble Generators from Rapid Water Technologies remove and prevent the buildup of biofilm and other deposits in commercial and industrial water use.

- ✓ Heat Transfer Efficiency
- ✓ Chemical Use
- ✓ Equipment Maintenance
- ✓ System Cleaning & Repair
- ✓ Increased Production
- ✓ Water Use
- ✓ Sanitation
(Legionella, Salmonella, COVID-19, etc.)



**Start saving
today!**



 **MERLO**
ENERGY

A MEMBER OF THE KENDALL GROUP

800-362-4994

sales@merloenergy.com

VP Legislative —Luciana Kayo

The 2021 Michigan Plumbing Code has been in effect since March 12, and one of the most important changes is the now permitted multi-user toilet facilities to serve all genders. The way to calculate the number of required plumbing fixtures for a building based on the occupant load is still the same as the previous version of the Code, but there are a couple of exclusions added to section 403.1.1 for fixture calculations:

- For facilities designed to be used by all genders, calculate the minimum number of fixtures using the total occupant load at 100%, following the requirements of table 403.1. In these all-gender facilities, each fixture must comply with ICC A117.1 standards, and any urinals must be installed within individual stalls.
- The need to distribute fixtures based on gender does not apply when providing single-user toilets and bathing rooms, as specified in section 403.1.2. Plumbing fixtures found in single-user toilet and bathing rooms, as well as in family or assisted-use toilet and bathing rooms as mandated by Section 1110.2.1 of the Michigan Building Code, will count towards the overall required fixture count for a building or tenant area. These single-user and family or assisted-use facilities must be clearly marked for use by individuals of any gender. The calculation of the total required fixtures can either follow the guidelines for the number of distinct facilities needed or combine the counts from both single-user and separate facilities.

Another couple of exceptions have also been added to Section 403.2, requirement for separate toilet facilities:

- When single-user toilet rooms are available, as described in Section 403.1.2, they do not need to be designated by gender.
- Facilities that include both water closets and lavatory fixtures, designed for use by all genders with privacy measures for water closets as specified in Section 405.3.4, do not need to be separate. If urinals are present, they must either be in a visually separated area or within individual stalls.

These new requirements led me to do further research standards that provide important details for compliance with all gender toilet design. One of them is the IAPMO/ANSI/CAN Z124.10, Standard for Water Closets and Urinal Partitions. This standard covers specifications for urinal and water closet partitions, detailing the materials, construction, performance testing, and signage requirements. It does not regulate the installation of walls or doors in the field that are used to provide privacy for water closets or urinals built according to building code regulations.

MEET THE GREAT BASIN™ FAMILY



Schier offers nine Great Basin™ models from 10 to 1,500 gallons.

Contact our team at 913.951.3300
or visit support@schierproducts.com



▲ GB-1000 Installation - Costco

REPRESENTED BY

Exceptional Product Sales

Office: (586) 286-3240

GM GREASEMONKEY™

Size your project with Grease Monkey.
GreaseMonkeySizing.com

LIFETIME GUARANTEED **GREASE INTERCEPTORS**

Made in the USA 

VP Legislative —Luciana Kayo (cont.)

In all gender toilets, level of privacy is very important and it is the responsibility of plumbing designers and engineers to educate architects on this matter. Toilet partitions are classified based on their privacy levels. Type A partitions, considered mandatory in all gender toilet facilities, feature doors designed to block visual observation and ensure user privacy and security. Type A partitions are required to have the bottom edge at no less than or equal to 4 inches from the finished floor. The top edge of the partition must be located greater than or equal to 84 inches above the finished floor. These requirements to partitions also apply to the doors. The doors must be designed without any gaps on either side, eliminating the possibility of visual observation from outside the stall. Additionally, the door's locking mechanism should be clearly identifiable as being locked from the exterior of the toilet stall. Type B partitions, often found in same gender toilet facilities, are allowed to have a gap of maximum ½ inch between the door and partition wall. Type C partitions, intended for men's restrooms, are urinal dividers that prevent visual observation from adjacent users.

Lastly, another very useful standard that all plumbing designers and engineers must have is the IAPMO's Manual of Recommended Practice for Toilet Room Design: All gender, Health, Safety, Privacy and Security. This manual provides guidance on procedures for the design of all gender toilet facilities not covered in the Plumbing Code. It includes fixture requirements for all gender toilet facilities, as well as provisions for safety and security, and signage. This manual can be downloaded for free from the IAPMO's website: <https://iapmo.org/standards-development/current-standards/manuals>

The IAPMO/ANSI/CAN Z124.10-2022 standard is available for purchase from the links below.

IAPMO Bookstore at \$100 non-members/\$80 for members: <https://iapmomembership.org/store/iapmo-ansi-can-z124-10-2022-water-closets-and-urinal-partitions-english/1157/>

ANSI Webstore at \$70: <https://webstore.ansi.org/standards/iapmo/iapmoansiz124102022>



Diversified
SPEC. SALES, INC.



Western Michigan

931 West River Center Dr. NE,
Comstock Park, MI 49321
p: 616.785.9000
f: 616.785.7347

Eastern Michigan

13261 Northend Ave,
Oak Park, MI 48237
p: 248.398.2400
f: 248.547.4905

Northeastern Ohio

2057 East Aurora Rd, Suite D
Twinsburg, OH 44087
p: 216.571.5721



New Century Sales, Inc.
 Manufacturer's Representatives

EAST MICHIGAN
 1715 Traditional Dr.
 Commerce Township, MI 48390
 P [248] 960-1147 F [248] 960-1149

WEST MICHIGAN
 550 36th St. SE
 Grand Rapids, MI 49548
 P [616] 600-9660

BETTER DESIGN. BETTER HEATER.
BEST SOLUTION

OUR BEST HYBRID YET.

Packed with the most durable, advanced features, the Rheem® Hybrid Water Heater makes install and service easier. Plus, with 50- and 80-gallon models available, it's the best solution to drive sales for your business.

- 360° Performance™**
 Estimated savings of over \$4000 in energy costs!
- 360° Installability™**
 Horizontal transport for easy pick-up
- 360° Durability™**
 Best-in-class warranty!



EcoNet™ enables you to work a mile from home up to 100 ft!

Rheem.com/HybridSolutions
 or contact your local distributor below for details

Maximum capacity of a 50-gallon Rheem Hybrid Water Heater is 40 gallons. Maximum capacity of an 80-gallon Rheem Hybrid Water Heater is 60 gallons. Actual capacity may vary. Always consult the manufacturer's instructions for proper installation and use. ©2014 Rheem Manufacturing Company. All rights reserved. Rheem, the Rheem logo, and EcoNet are trademarks of Rheem Manufacturing Company. Other brands and product names are trademarks of their respective owners. Rheem and the Rheem logo are registered trademarks of Rheem Manufacturing Company.

**UP TO \$300
 FEDERAL TAX CREDIT***



The new degree of comfort™



Filtration Without Frustration

Save Time and Money On Maintenance. Access OASIS filtration systems at the top of the bottle fillers with Tilt 'n Tether! Change filters in minutes with easy access to the filter up top. Oasis' exclusive Tilt 'N Tether allows for faster, hands-free filter changes without crawling on the floor.

Learn more at oasiscoolers.com



OASIS
 WE KNOW WATER.™

Changing Filters Has Never Been Easier



**GREAT LOOKING.
 GREAT OPTIONS.
 GREAT VALUE.**

BRADLEY LAVATORY SYSTEMS offer a variety of touch free and worry-free options for handwashing in public spaces. Design your ideal solution with multiple materials, basin shapes and faucet choices. Trust Bradley for your next project, the leader in commercial handwashing. Visit bradleycorp.com for more information. Commercial Washrooms. Brought to Life.

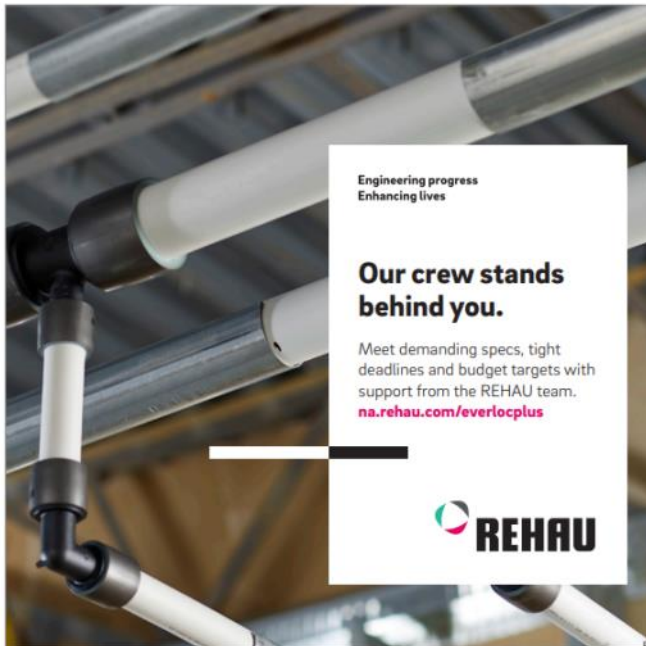


EVERO
 CAST-FORMED NATURAL QUARTZ

Tereon
 CAST-FORMED SOLID SURFACE



bradleycorp.com/lavatory-systems



Engineering progress
 Enhancing lives

Our crew stands behind you.

Meet demanding specs, tight deadlines and budget targets with support from the REHAU team.
na.rehau.com/everloplus



Represented by New Century Sales:

WEST MICHIGAN
 Michael Zago
 C (616) 293-2121
 E mikez@newcenturysales.com

EAST MICHIGAN
 Todd Hiler
 C (513) 633-2609
 E toddh@newcenturysales.com

EAST MICHIGAN
 Ross Beck
 C (734) 673-2119
 E rossb@newcenturysales.com

Represented by New Century Sales:

WEST MICHIGAN
 Michael Zago
 C (616) 293-2121
 E mikez@newcenturysales.com

EAST MICHIGAN
 Todd Hiler
 C (513) 633-2609
 E toddh@newcenturysales.com

EAST MICHIGAN
 Ross Beck
 C (734) 673-2119
 E rossb@newcenturysales.com

www.newcenturysales.com

2023-2024 ASPE Western Michigan Meetings

September 13th & 14th
Tyler Ismert
Schier Products
Grease Interceptor Sizing

December 14th (Christmas Party)
Cody Mack
Caleffi North America
Mixing And Balancing In Domestic
Hot Water Systems

March 13th & 14th
Stadium Design
Julius Ballanco

October 11th & 12th
Josh Pedraja
Patton's Medical
Medical Gas 101

January 10th & 11th
Thad Kuzma and Joe Hancock
Flow-Tech Systems
Legionella Filtration

April 3rd & 4th
Marco DeAngelo
Arkema Inc.
Codes And Standards In The
Plenum With Corrosive Waste
Drainage

November 8th & 9th
Dawn Cole
Quality Water & Air Inc.
Siphonic Storm Drainage Systems

February 7th & 8th
Bob Taylor
McWane Plumbing Group
The History Of Cast Iron

May 20th
ASPE Annual Golf Outing

2022-2023 ASPE Western Michigan Chapter Board

PRESIDENT

Brian Peceny
Progressive AE
(616) 365-6541
pecenyb@progressiveae.com

VP—MEMBERSHIP

John Cassady
AirTech Equipment
(616) 648 7703
Jcassady30@gmail.com

EVENT COORDINATOR

Breanna Kooiman
Progressive AE
(616) 988-4854
kooimanb@progressiveae.com

TREASURER

Chuck Shoudel, CPD, GGP
Byce & Associates
(269) 488-7195
chuck.shoudel@byce.com

ADMINISTRATIVE SECRETARY

Travis Smith, CPD
Progressive AE
(616) 988-4862
smitht2@progressiveae.com

BOARD ADDRESS:

ASPE Western Michigan
P.O. Box 150047
Grand Rapids, MI 49515
aspewestmichigan@gmail.com

VP—TECHNICAL

Nick Von Myhr
GMB
(616) 322-4713
nickv@gmb.com

CORRESPONDING SECRETARY

Jonathan Burke
Burke Agency
(616) 217-1399
jmburke@burkeagency.com

VP—EDUCATION

Tom Kingshott, CPD, GPD
Progressive AE
(616) 361-2664
kingshottt@progressiveae.com

VP—LEGISLATIVE

Luciana Kayo, CPD
Comprehensive Engineering
(616) 737-9227
lucianak@compeng.com

Improve the performance and safety of your hot water systems.

THE BRAIN® from Armstrong International

- Ready to go out of the box or field adjustable via Bluetooth® connectivity with the SAGE® mobile app
- +/-2°F DRV water temperature control at peak, moderate or zero fixture demand on hot water system designed for continuous recirculation
- Programmable set point range of 81-158°F (27-70°C) capable of BAS or SAGE® mobile app for monitoring and adjustment
- 1°F minimum recirculating water temperature differential



- Programmable thermal disinfection range of 158-185°F (70-85°C)
- Automatic safe closure of hot water inlet in response to: inlet supply failure, 110V power failure, or programmable high temperature error
- Automatic safe closure of hot water inlet powered by a replaceable lithium battery monitored for low-level alerting

Find
out
more



MERLO
ENERGY

A MEMBER OF THE KENDALL GROUP

Contact us:
800-362-4994
sales@merloenergy.com



Lloyd Cooper
 Manufacturers Representative
 Plumbing and Heating Products
 LloydC@jwsalesinc.net
 orders@jwsalesinc.net

1774 W Tuttle Rd
 Ionia, MI 48846
 (248) 745-8590
 CELL (616) 273-0992
 www.jwsalesinc.net



Tim Jones
 Technical Manager
 Great Lakes Region

816 Maple Street
 Three Rivers, MI 49093 - U.S.A.
 Direct Phone: (269) 279-3104
 Mobile Phone: (269) 532-4441
 tjones@armstronginternational.com
 armstronginternational.com

Intelligent System Solutions STEAM • AIR • HOT WATER



GMB
 www.gmb.com



New Century Sales, Inc.
 Manufacturer's Representatives

550 36th St. SE
 Grand Rapids, MI 49548

Michael Zago
 Principal
 D (616) 600-9660 x 107
 C (616) 293-2121
 E mikez@newcenturysales.com


Ross Beck
 Principal
 D (248) 960-1147 x 115
 C (734) 673-2119
 E rossb@newcenturysales.com





Commercial - Industrial
 Plumbing - Heating
 Sheetmetal
 Design - Build
 Process Piping

NORTHWEST KENT MECHANICAL CO.
 P.O. Box 216K · 4095 16 Mile Rd.
 Cedar Springs, Michigan 49319
 www.nwkentmech.com

(616) 696-9026
 FAX (616) 696-9327



DAVE WATSON ASSOCIATES, INC.
 Manufactures' Representatives

LE ultra pure water system, LabWaste high temp corrosive waste DWV system, CPVC / PVC pipe, valves and fittings. Ames / Febco backflow, pressure - temperature regulation. Mueller strainers and valves.

OFFICE (800) 589-5595
 CHARLIE WATSON

CELL (616) 828-8309
 EMAIL CWATSON@DAVEWATSON.BIZ

SALES SERVICE PLUS, INC.
 Manufacturers Representatives



Dustin Gardner
 Territory Manager

"SERVICE IS OUR MIDDLE NAME"

45606 Mast Street, Plymouth, MI 48170
 DGardner@SalesServicePlus.com
 www.SalesServicePlus.com

(734) 454-7620 EXT 128
 (734) 454-7632
 (616) 273-1999

Jim Escamilla, PE
 President/CEO

306 South Kalamazoo Mall
 Kalamazoo, Michigan 49007
 t: 269.381.6170
 f: 269.381.6176
 c: 269.569.3550
 jim.escamilla@byce.com

BYCE
 ASSOCIATES, P.C.
 ENGINEERS + ARCHITECTS

INNOVATIVE PRACTICAL SOLUTIONS
 CIVIL ARCHITECTURAL INTERIOR DESIGN STRUCTURAL MECHANICAL
 ELECTRICAL BUILDING COMMISSIONING PROJECT MANAGEMENT

Jonathan M. Burke



BURKE AGENCY
MANUFACTURERS' REPRESENTATIVE

Cell: (616) 217-1399

IMMEDIATE IMPACT. LASTING RELATIONSHIPS. EXTRAORDINARY RESULTS.



5402 RUSCHE DR NW
COMSTOCK PARK, MI 49321

ZMALEWITZ@EMGSM.COM
616.279.6471 M
616.785.4188 O

ZAC MALEWITZ
SALES

EMGSM.COM

Aaron Burrows
West MI Territory Manager



13050 Northend Ave. Oak Park
Cell: 231-292-6400
Office: 313-864-2800
aburrows@balfrey-johnston.com

Serving the Construction Industry since 1959
<https://www.balfrey-johnston.com/>



Brian Underhill
Applications Engineer
Cell 616-292-7194
bunderhill@fliersinc.com

PURE engineering. PURE service. PURIFICATION.

7425 Clyde Park SW | Byron Center, MI 49315
Ph 616-583-9040 Ext 126 | 800-898-5525 | Fx 616-583-1230



Mechanical
Electrical
Structural
Civil

Comprehensive Engineering
4650 Plainfield Ave NE, Suite A
Grand Rapids, MI 49525

Tel: (616) 365.9933
www.compeng.com

Bill Rohen 616.286.0000 - m



Manufacturers' Representative
Jenison, Michigan 49428
616.286.0000 - office
www.taggartknight.com

bill.rohen@taggartknight.com



Diversified
SPEC. SALES, INC.

Shawn Olger
cell: 616.799.0450
office: 616.785.9000
solger@dsshowley.com

931 West River Center Dr, Comstock Park, MI 49321
p: 616.785.9000 f: 616-785-7347
www.diversifiedspec.com



Diversified
SPEC. SALES, INC.

Matt Sleper
cell: 269.267.2401
office: 616.785.9000
msleper@dsshowley.com

931 West River Center Dr, Comstock Park, MI 49321
p: 616.785.9000 f: 616-785-7347
www.diversifiedspec.com



Western Michigan Chapter

Help promote your business and support your local ASPE chapter by advertising in the 2023/2024 Western Michigan ASPE Society Newsletter which reaches local plumbing and mechanical engineers as well as local wholesale members. Choose the advertising level that best suits your needs. This increase in publicity for your company will be an asset for all parties involved.

Business card: \$150

Manufacturer Ads:

1/8 Page \$260

1/4 Page \$475

Full Page \$880

Included with your fee:

(9) issues of the newsletter

(9) inserts of the Business Card Ad in the newsletter

ASPE will once again be allowing you to rotate your advertisement throughout the year! If you wish to change your ad during the 2023/2024 session, email the new ad to me, and it will be changed in the following newsletter.

Advertising space can be purchased on the West Michigan ASPE website:

[Click here to purchase advertising space in the 2023/2024 newsletter](#)

Please send a copy of your ads and/or business cards to Jonathan Burke:

Phone: (616) 217-1399 Email: jmburke@burkeagency.com

Thank you for supporting your local ASPE chapter.